

RXR- α (Phospho-Ser260) Antibody

Catalog No: #12554

Package Size: #12554-1 50ul #12554-2 100ul

Orders: order@signalwayantibody.comSupport: tech@signalwayantibody.com

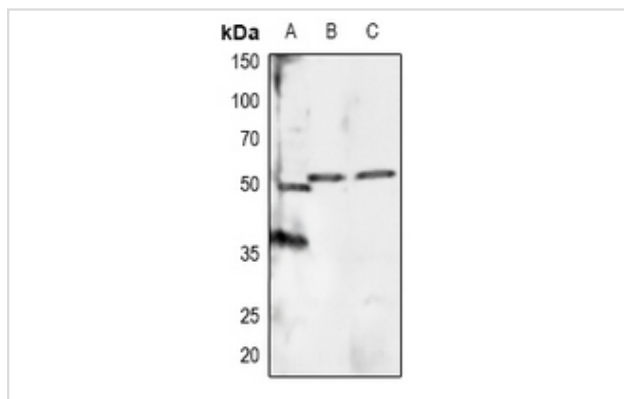
Description

Product Name	RXR- α (Phospho-Ser260) Antibody
Host Species	Rabbit
Clonality	Polyclonal
Purification	Antibodies were produced by immunizing rabbits with synthetic phosphopeptide and KLH conjugates. Antibodies were purified by affinity-chromatography using epitope-specific phosphopeptide. Non-phospho specific antibodies were removed by chromatography using non-phosphopeptide.
Applications	WB
Species Reactivity	Hu Ms Rt
Specificity	RXR- α (Phospho-Ser260) Antibody detects endogenous levels of RXR- α only when phosphorylated at Ser260
Immunogen Type	Peptide
Immunogen Description	A synthesized peptide derived from human RXR- α (Phospho-Ser260)
Target Name	RXR- α
Modification	Phospho
Other Names	RXRA, RXR-alpha, NR2B1, Retinoid X receptor alpha, Retinoid X receptor, alpha
Accession No.	Swiss-Prot#: P19793NCBI Gene ID: 6256
Uniprot	P19793
GeneID	6256;
Target Species	human
Calculated MW	51kd
Concentration	1.0mg/ml
Formulation	Liquid in 0.42% Potassium phosphate, 0.87% Sodium chloride, pH 7.3, 30% glycerol, and 0.01% sodium azide.
Storage	Store at -20°C

Application Details

WB (1/500 - 1/1000)

Images



Western blot analysis of RXR alpha (pS260) expression in HeLa (A), mouse brain (B), rat brain (C) whole cell lysates.

Note: This product is for in vitro research use only