

BCL-10 (Phospho-Ser138) Antibody

Catalog No: #12555



Package Size: #12555-1 50ul #12555-2 100ul

Orders: order@signalwayantibody.comSupport: tech@signalwayantibody.com

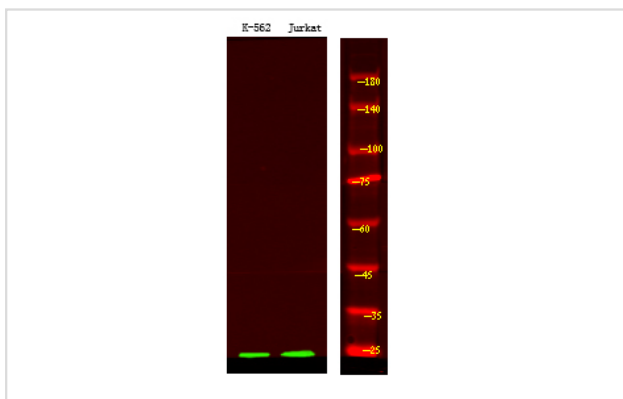
Description

Product Name	BCL-10 (Phospho-Ser138) Antibody
Host Species	Rabbit
Clonality	Polyclonal
Purification	Antibodies were produced by immunizing rabbits with synthetic phosphopeptide and KLH conjugates. Antibodies were purified by affinity-chromatography using epitope-specific phosphopeptide. Non-phospho specific antibodies were removed by chromatography using non-phosphopeptide.
Applications	WB
Species Reactivity	Hu Rt
Specificity	BCL-10 (Phospho-Ser138) Antibody detects endogenous levels of BCL-10 only when phosphorylated at Ser138
Immunogen Type	Peptide
Immunogen Description	A synthesized peptide derived from human BCL-10 (Phospho-Ser138)
Target Name	BCL-10
Modification	Phospho
Other Names	BCL10, Bcl-10, B-cell CLL/lymphoma 10, B-cell lymphoma/leukemia 10, CARMEN, CARD-like apoptotic protein, CCARMEN, C-E10, CIPER, Cellular-E10, HCLAP, Cellular homolog of vCARMEN, CLAP, ME10
Accession No.	Swiss-Prot#: O95999NCBI Gene ID: 8915
Uniprot	O95999
GeneID	8915;
Target Species	human
Calculated MW	36kd
Concentration	1.0mg/ml
Formulation	Rabbit IgG in phosphate buffered saline (without Mg ²⁺ and Ca ²⁺), pH 7.4, 150mM NaCl, 0.02% sodium azide and 50% glycerol.
Storage	Store at -20°C

Application Details

Western blotting: 1:1000

Images



Western Blot analysis of lysates of K-562 and Jurkat cell, using primary antibody at 1:1000 dilution.

Note: This product is for in vitro research use only