

FGFR1/2 (Phospho-Tyr730/733) Antibody

Catalog No: #12563



Package Size: #12563-1 50ul #12563-2 100ul

Orders: order@signalwayantibody.com

Support: tech@signalwayantibody.com

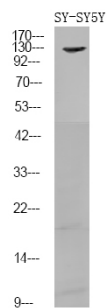
Description

Product Name	FGFR1/2 (Phospho-Tyr730/733) Antibody
Host Species	Rabbit
Clonality	Polyclonal
Purification	Antibodies were produced by immunizing rabbits with synthetic phosphopeptide and KLH conjugates. Antibodies were purified by affinity-chromatography using epitope-specific phosphopeptide. Non-phospho specific antibodies were removed by chromatography using non-phosphopeptide.
Applications	WB
Species Reactivity	Hu Ms Rt
Specificity	FGFR1/2 (Phospho-Tyr730/733) Antibody detects endogenous levels of FGFR1/2 only when phosphorylated at Tyr730/733
Immunogen Type	Peptide
Immunogen Description	A synthesized peptide derived from human FGFR1/2 (Phospho-Tyr730/733)
Target Name	FGFR1/2
Modification	Phospho
Other Names	FGFR1, BFGF receptor, BFGF-R, BFGF-R-1, CD331, Cek1, CD331 antigen, FGFR1/PLAG1 fusion, FLT2, Fgf-flg, FGFR, FGFR-1, Fms-like tyrosine kinase 2, HBGFR, HH2, Hydroxyaryl-protein kinase, FGF receptor 1, Fms-related tyrosine kinase 2, Proto-oncogene c- ...
Accession No.	Swiss-Prot#: P11362/P21802NCBI Gene ID: 2260
Uniprot	P11362
GeneID	2260;
Target Species	human
Calculated MW	92kd
Concentration	1.0mg/ml
Formulation	Rabbit IgG in phosphate buffered saline (without Mg2+ and Ca2+), pH 7.4, 150mM NaCl, 0.02% sodium azide and 50% glycerol.
Storage	Store at -20°C

Application Details

Western blotting: 1:1000

Images



Western Blot analysis of lysates of SY-SY5Y cell, using primary antibody at 1:1000 dilution.

Note: This product is for in vitro research use only