

## Connexin 43 (Phospho-Ser282) Antibody

Catalog No: #12565



Package Size: #12565-1 50ul #12565-2 100ul

Orders: [order@signalwayantibody.com](mailto:order@signalwayantibody.com)Support: [tech@signalwayantibody.com](mailto:tech@signalwayantibody.com)

## Description

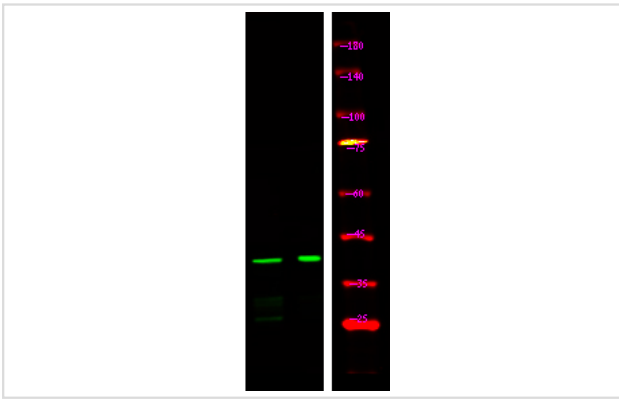
Product Name	Connexin 43 (Phospho-Ser282) Antibody
Host Species	Rabbit
Clonality	Polyclonal
Purification	Antibodies were produced by immunizing rabbits with synthetic phosphopeptide and KLH conjugates. Antibodies were purified by affinity-chromatography using epitope-specific phosphopeptide. Non-phospho specific antibodies were removed by chromatography using non-phosphopeptide.
Applications	WB
Species Reactivity	Hu Ms Rt
Specificity	Connexin 43 (Phospho-Ser282) Antibody detects endogenous levels of Connexin 43 only when phosphorylated at Ser282
Immunogen Type	Peptide
Immunogen Description	A synthesized peptide derived from human Connexin 43 (Phospho-Ser282)
Target Name	Connexin 43
Modification	Phospho
Other Names	GJA1, Connexin-43, DFNB38, Connexin 43, Gap junction alpha-1 protein, GJAL, HSS, Gap junction protein alpha 1, ODDD, ODD, AVSD3, CX43, HLHS1, ODO, SDTY3
Accession No.	Swiss-Prot#: P17302NCBI Gene ID: 2697
Uniprot	P17302
GeneID	2697;
Target Species	human
Calculated MW	43kd
Concentration	1.0mg/ml
Formulation	Rabbit IgG in phosphate buffered saline (without Mg <sup>2+</sup> and Ca <sup>2+</sup> ), pH 7.4, 150mM NaCl, 0.02% sodium azide and 50% glycerol.
Storage	Store at -20°C

## Application Details

Western blotting: 1:1000

## Images

Western Blot analysis of lysates of HEK-293 cell (Left) and HEK-293 cell treated with 100ng/mL LPS for 30min (Right), using primary antibody at 1:1000 dilution.



Note: This product is for in vitro research use only