

Acinus (Phospho-Ser1180) Antibody

Catalog No: #12570

Package Size: #12570-1 50ul #12570-2 100ul

Orders: order@signalwayantibody.comSupport: tech@signalwayantibody.com

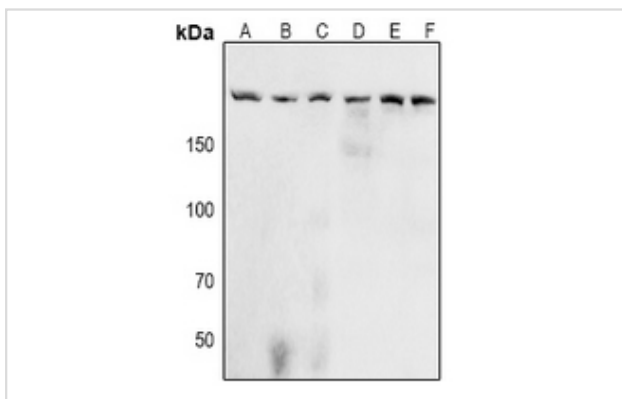
Description

Product Name	Acinus (Phospho-Ser1180) Antibody
Host Species	Rabbit
Clonality	Polyclonal
Purification	Antibodies were produced by immunizing rabbits with synthetic phosphopeptide and KLH conjugates. Antibodies were purified by affinity-chromatography using epitope-specific phosphopeptide. Non-phospho specific antibodies were removed by chromatography using non-phosphopeptide.
Applications	WB
Species Reactivity	Hu Ms Rt
Specificity	Acinus (Phospho-Ser1180) Antibody detects endogenous levels of Acinus only when phosphorylated at Ser1180
Immunogen Type	Peptide
Immunogen Description	A synthesized peptide derived from human Acinus (Phospho-Ser1180)
Target Name	Acinus
Modification	Phospho
Other Names	ACIN1, ACINUS, ACN, KIAA0670, FSAP152
Accession No.	Swiss-Prot#: Q9UKV3/O95104/Q8TF01/Q14498NCBI Gene ID: 22985/57466/25957/9584
Uniprot	Q9UKV3
GeneID	22985;
Target Species	human
Calculated MW	150kd
Concentration	1.0mg/ml
Formulation	Rabbit IgG in phosphate buffered saline (without Mg ²⁺ and Ca ²⁺), pH 7.4, 150mM NaCl, 0.02% sodium azide and 50% glycerol.
Storage	Store at -20°C

Application Details

Western blotting: 1:1000

Images



Western blot analysis of Acinus (Phospho-Ser1180) expression in A549 (A), HeLa (B), Jurkat (C), NIH3T3 (D), H9C2 (E), PC12 (F) whole cell lysates.

Note: This product is for in vitro research use only