

ANXA1 (Phospho-Tyr21) Antibody

Catalog No: #12572

Package Size: #12572-1 50ul #12572-2 100ul

Orders: order@signalwayantibody.comSupport: tech@signalwayantibody.com

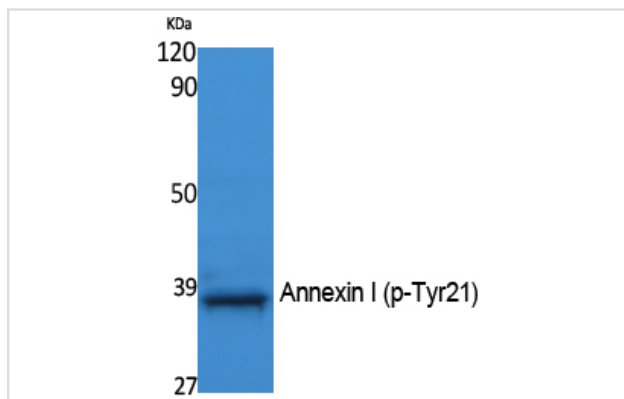
Description

Product Name	ANXA1 (Phospho-Tyr21) Antibody
Host Species	Rabbit
Clonality	Polyclonal
Purification	Antibodies were produced by immunizing rabbits with synthetic phosphopeptide and KLH conjugates. Antibodies were purified by affinity-chromatography using epitope-specific phosphopeptide. Non-phospho specific antibodies were removed by chromatography using non-phosphopeptide.
Applications	WB
Species Reactivity	Hu
Specificity	ANXA1 (Phospho-Tyr21) Antibody detects endogenous levels of ANXA1 only when phosphorylated at Tyr21
Immunogen Type	Peptide
Immunogen Description	A synthesized peptide derived from human ANXA1 (Phospho-Tyr21)
Target Name	ANXA1
Modification	Phospho
Other Names	ANXA1, Annexin A1, Annexin I, Annexin-1, ANX1, Calpactin II, Chromobindin-9, Lipocortin I, Annexin I (lipocortin I), Calpactin-2, LPC1
Accession No.	Swiss-Prot#: P04083NCBI Gene ID: 301
Uniprot	P04083
GeneID	301;
Target Species	human
Calculated MW	37kd
Concentration	1.0mg/ml
Formulation	Rabbit IgG in phosphate buffered saline (without Mg ²⁺ and Ca ²⁺), pH 7.4, 150mM NaCl, 0.02% sodium azide and 50% glycerol.
Storage	Store at -20°C

Application Details

Western blotting: 1:1000

Images



Western Blot analysis of extracts from NIH-3T3 cells, using Phospho-Annexin I (Y21) Polyclonal Antibody.

Note: This product is for in vitro research use only