

BAG3 (Phospho-Tyr457) Antibody

Catalog No: #12575

Package Size: #12575-1 50ul #12575-2 100ul

Orders: order@signalwayantibody.comSupport: tech@signalwayantibody.com

Description

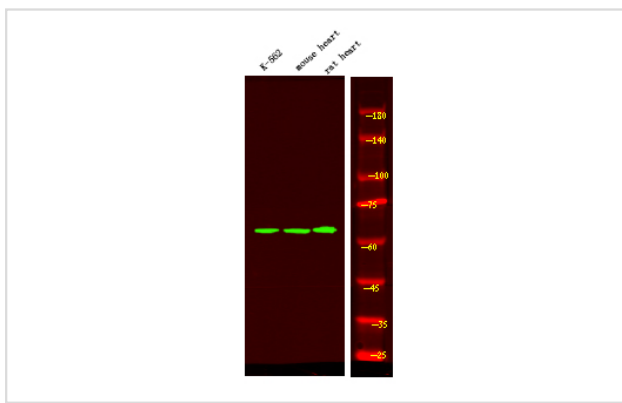
Product Name	BAG3 (Phospho-Tyr457) Antibody
Host Species	Rabbit
Clonality	Polyclonal
Purification	Antibodies were produced by immunizing rabbits with synthetic phosphopeptide and KLH conjugates. Antibodies were purified by affinity-chromatography using epitope-specific phosphopeptide. Non-phospho specific antibodies were removed by chromatography using non-phosphopeptide.
Applications	WB
Species Reactivity	Hu Ms Rt
Specificity	BAG3 (Phospho-Tyr457) Antibody detects endogenous levels of BAG3 only when phosphorylated at Tyr457
Immunogen Type	Peptide
Immunogen Description	A synthesized peptide derived from human BAG3 (Phospho-Tyr457)
Target Name	BAG3
Modification	Phospho
Other Names	BAG3, Bcl-2-associated athanogene 3, Bcl-2-binding protein Bis, BCL2-binding athanogene 3, BIS, BAG-3, CAIR-1, Docking protein cair1, BCL2-associated athanogene 3, Docking protein CAIR-1
Accession No.	Swiss-Prot#: O95817NCBI Gene ID: 9531
Uniprot	O95817
GeneID	9531;
Target Species	human
Calculated MW	62kd
Concentration	1.0mg/ml
Formulation	Rabbit IgG in phosphate buffered saline (without Mg ²⁺ and Ca ²⁺), pH 7.4, 150mM NaCl, 0.02% sodium azide and 50% glycerol.
Storage	Store at -20°C

Application Details

Western blotting: 1:1000

Images

Western Blot analysis of lysates of K-562 cell, mouse heart and rat heart, using primary antibody at 1:1000 dilution.



Note: This product is for in vitro research use only