

## Bcl-6 (Phospho-Ser343) Antibody

Catalog No: #12576

Package Size: #12576-1 50ul #12576-2 100ul

Orders: [order@signalwayantibody.com](mailto:order@signalwayantibody.com)Support: [tech@signalwayantibody.com](mailto:tech@signalwayantibody.com)

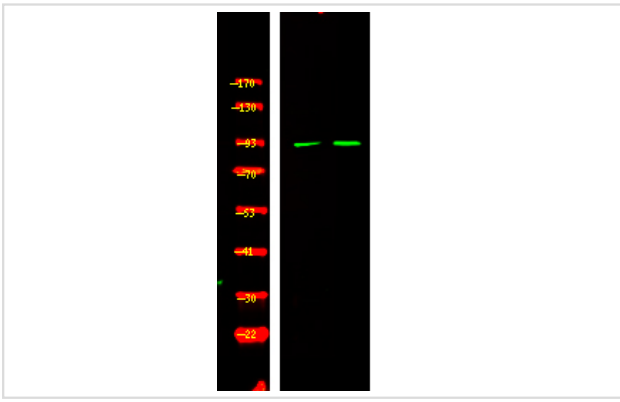
## Description

Product Name	Bcl-6 (Phospho-Ser343) Antibody
Host Species	Rabbit
Clonality	Polyclonal
Purification	Antibodies were produced by immunizing rabbits with synthetic phosphopeptide and KLH conjugates. Antibodies were purified by affinity-chromatography using epitope-specific phosphopeptide. Non-phospho specific antibodies were removed by chromatography using non-phosphopeptide.
Applications	WB
Species Reactivity	Hu Ms
Specificity	Bcl-6 (Phospho-Ser343) Antibody detects endogenous levels of Bcl-6 only when phosphorylated at Ser343
Immunogen Type	Peptide
Immunogen Description	A synthesized peptide derived from human Bcl-6 (Phospho-Ser343)
Target Name	Bcl-6
Modification	Phospho
Other Names	Bcl-6 (Phospho-Ser343) Antibody
Accession No.	Swiss-Prot#: P41182NCBI Gene ID: 604
Uniprot	P41182
GeneID	604;
Target Species	human
Calculated MW	78kd
Concentration	1.0mg/ml
Formulation	Rabbit IgG in phosphate buffered saline (without Mg <sup>2+</sup> and Ca <sup>2+</sup> ), pH 7.4, 150mM NaCl, 0.02% sodium azide and 50% glycerol.
Storage	Store at -20°C

## Application Details

Western blotting: 1:1000

## Images



Western Blot analysis of lysates of Raji cell (Left) and Raji cell Serum-free treated (Right), using primary antibody at 1:1000 dilution.

---

Note: This product is for in vitro research use only