

## Bim (Phospho-Thr56/116) Antibody

Catalog No: #12579

Package Size: #12579-1 50ul #12579-2 100ul

Orders: [order@signalwayantibody.com](mailto:order@signalwayantibody.com)Support: [tech@signalwayantibody.com](mailto:tech@signalwayantibody.com)

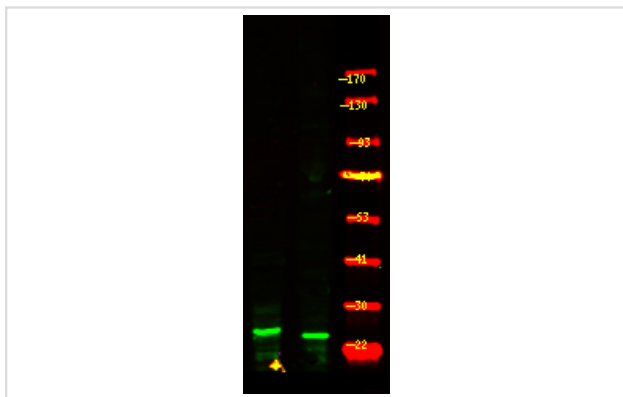
## Description

Product Name	Bim (Phospho-Thr56/116) Antibody
Host Species	Rabbit
Clonality	Polyclonal
Purification	Antibodies were produced by immunizing rabbits with synthetic phosphopeptide and KLH conjugates. Antibodies were purified by affinity-chromatography using epitope-specific phosphopeptide. Non-phospho specific antibodies were removed by chromatography using non-phosphopeptide.
Applications	WB
Species Reactivity	Hu Ms Rt
Specificity	Bim (Phospho-Thr56/116) Antibody detects endogenous levels of Bim only when phosphorylated at Thr56/116
Immunogen Type	Peptide
Immunogen Description	A synthesized peptide derived from human Bim (Phospho-Thr56/116)
Target Name	Bim
Modification	Phospho
Other Names	BCL2L11, BIM-alpha6, BIM-beta7, Bcl-2-like protein 11, BIM-beta6, BimL, BimS, Bcl-2 interacting protein Bim, BimEL, BAM, Bcl2-L-11, BIM, BOD
Accession No.	Swiss-Prot#: O43521NCBI Gene ID: 10018
Uniprot	O43521
GeneID	10018;
Target Species	human
Calculated MW	25kd,22kd
Concentration	1.0mg/ml
Formulation	Liquid in PBS containing 50% glycerol, and 0.02% sodium azide.
Storage	Store at -20°C

## Application Details

Western blotting: 1:1000

## Images



Western Blot analysis of lysates of Jurkat cell Serum-free treated (Left) and Jurkat cell (Right), using primary antibody at 1:1000 dilution.

---

Note: This product is for in vitro research use only