

BORA (Phospho-Ser497) Antibody

Catalog No: #12581

Package Size: #12581-1 50ul #12581-2 100ul

Orders: order@signalwayantibody.com

Support: tech@signalwayantibody.com

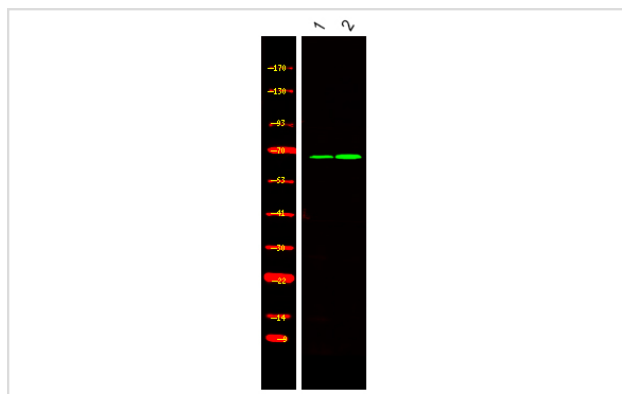
Description

Product Name	BORA (Phospho-Ser497) Antibody
Host Species	Rabbit
Clonality	Polyclonal
Purification	Antibodies were produced by immunizing rabbits with synthetic phosphopeptide and KLH conjugates. Antibodies were purified by affinity-chromatography using epitope-specific phosphopeptide. Non-phospho specific antibodies were removed by chromatography using non-phosphopeptide.
Applications	WB
Species Reactivity	Hu Rt
Specificity	BORA (Phospho-Ser497) Antibody detects endogenous levels of BORA only when phosphorylated at Ser497
Immunogen Type	Peptide
Immunogen Description	A synthesized peptide derived from human BORA (Phospho-Ser497)
Target Name	BORA
Modification	Phospho
Other Names	BORA, Aurora borealis, C13orf34, HsBora, RP11-342J4.2, Protein aurora borealis
Accession No.	Swiss-Prot#: Q6PGQ7NCBI Gene ID: 79866
Uniprot	Q6PGQ7
GeneID	79866;
Target Species	human
Calculated MW	61kd
Concentration	1.0mg/ml
Formulation	Liquid in PBS containing 50% glycerol, 0.5% BSA and 0.02% sodium azide.
Storage	Store at -20°C

Application Details

Western blotting: 1:1000

Images



Western Blot analysis of lysates of 1. Jurkat and 2. Jurkat treated with 100ng/mL LPS for 30min, using primary antibody at 1:1000 dilution.

Note: This product is for in vitro research use only