

## CEP55 (Phospho-Ser425) Antibody

Catalog No: #12585



Package Size: #12585-1 50ul #12585-2 100ul

Orders: [order@signalwayantibody.com](mailto:order@signalwayantibody.com)Support: [tech@signalwayantibody.com](mailto:tech@signalwayantibody.com)

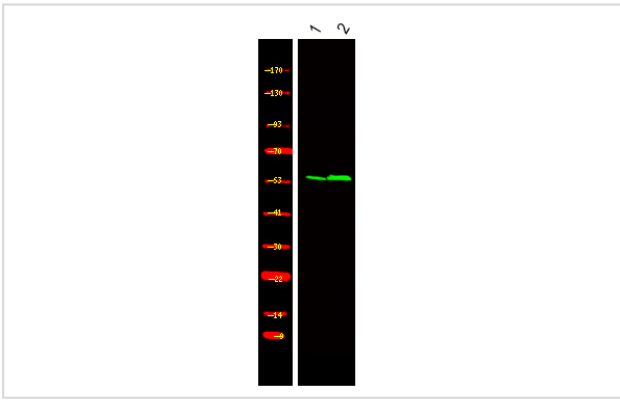
## Description

Product Name	CEP55 (Phospho-Ser425) Antibody
Host Species	Rabbit
Clonality	Polyclonal
Purification	Antibodies were produced by immunizing rabbits with synthetic phosphopeptide and KLH conjugates. Antibodies were purified by affinity-chromatography using epitope-specific phosphopeptide. Non-phospho specific antibodies were removed by chromatography using non-phosphopeptide.
Applications	WB
Species Reactivity	Hu
Specificity	CEP55 (Phospho-Ser425) Antibody detects endogenous levels of CEP55 only when phosphorylated at Ser425
Immunogen Type	Peptide
Immunogen Description	A synthesized peptide derived from human CEP55 (Phospho-Ser425)
Target Name	CEP55
Modification	Phospho
Other Names	CEP55, Cancer/testis antigen 111, Centrosomal protein of 55 kDa, C10orf3, CT111, Centrosomal protein 55kDa, URCC6, Up-regulated in colon cancer 6
Accession No.	Swiss-Prot#: Q53EZ4 NCBI Gene ID: 55165
Uniprot	Q53EZ4
GeneID	55165;
Target Species	human
Calculated MW	54kd
Concentration	1.0mg/ml
Formulation	Rabbit IgG in phosphate buffered saline (without Mg <sup>2+</sup> and Ca <sup>2+</sup> ), pH 7.4, 150mM NaCl, 0.02% sodium azide and 50% glycerol.
Storage	Store at -20°C

## Application Details

Western blotting: 1:1000

## Images



Western Blot analysis of lysates of 1. HEK-293 cell and 2. HEK-293 cell treated with 100ng/mL LPS for 30min , using primary antibody at 1:1000 dilution.

---

Note: This product is for in vitro research use only