

## Claspin (Phospho-Ser30) Antibody

Catalog No: #12586

Package Size: #12586-1 50ul #12586-2 100ul

Orders: [order@signalwayantibody.com](mailto:order@signalwayantibody.com)Support: [tech@signalwayantibody.com](mailto:tech@signalwayantibody.com)

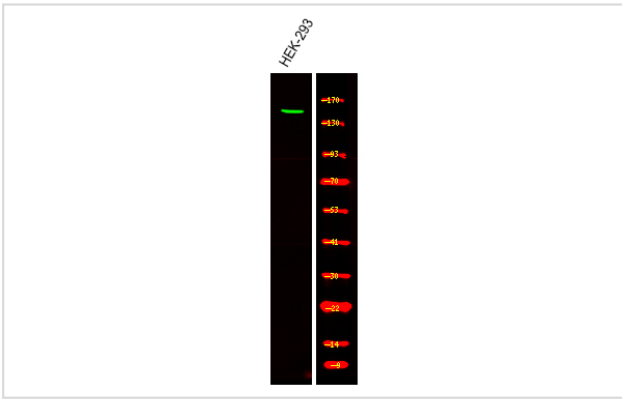
## Description

Product Name	Claspin (Phospho-Ser30) Antibody
Host Species	Rabbit
Clonality	Polyclonal
Purification	Antibodies were produced by immunizing rabbits with synthetic phosphopeptide and KLH conjugates. Antibodies were purified by affinity-chromatography using epitope-specific phosphopeptide. Non-phospho specific antibodies were removed by chromatography using non-phosphopeptide.
Applications	WB
Species Reactivity	Hu
Specificity	Claspin (Phospho-Ser30) Antibody detects endogenous levels of Claspin only when phosphorylated at Ser30
Immunogen Type	Peptide
Immunogen Description	A synthesized peptide derived from human Claspin (Phospho-Ser30)
Target Name	Claspin
Modification	Phospho
Other Names	CLSPN, Claspin homolog, Claspin, HClaspin
Accession No.	Swiss-Prot#: Q9HAW4NCBI Gene ID: 63967
Uniprot	Q9HAW4
GeneID	63967;
Target Species	human
Calculated MW	150kd
Concentration	1.0mg/ml
Formulation	Rabbit IgG in phosphate buffered saline (without Mg <sup>2+</sup> and Ca <sup>2+</sup> ), pH 7.4, 150mM NaCl, 0.02% sodium azide and 50% glycerol.
Storage	Store at -20°C

## Application Details

Western blotting: 1:1000

## Images



Western Blot analysis of lysates of HEK293, using primary antibody at 1:1000 dilution.

Note: This product is for in vitro research use only