

BCL2L1 antibody

Catalog No: #22968

Orders: order@signalwayantibody.com

Support: tech@signalwayantibody.com

Description

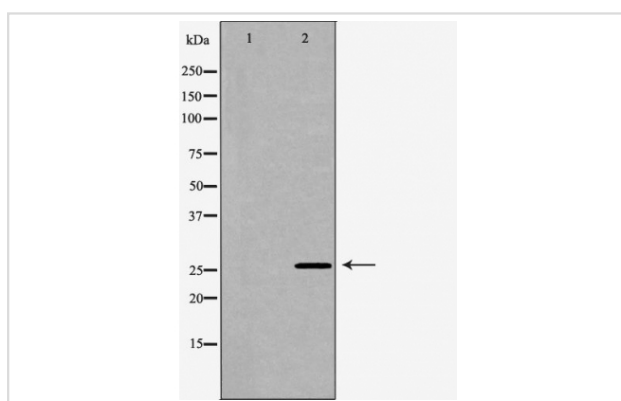
Product Name	BCL2L1 antibody
Host Species	Rabbit
Clonality	Polyclonal
Purification	Purified by antigen-affinity chromatography.
Applications	WB
Species Reactivity	Hu Ms Rt
Immunogen Type	Recombinant Protein
Immunogen Description	Recombinant protein of human BCL2L1
Target Name	BCL2L1
Accession No.	NCBI Gene ID: 598NCBI mRNA#: NM_001191NCBI Protein#: NP_001182
Uniprot	Q07817
GeneID	598;
Concentration	1mg/ml
Formulation	Rabbit IgG in phosphate buffered saline , pH 7.4, 150mM NaCl, 0.02% sodium azide and 50% glycerol.
Storage	Store at -20°C for long term preservation (recommended). Store at 4°C for short term use.

Application Details

Predicted MW: 26kd

Western blotting: 1:500-1:2000

Images



Western blot analysis of extracts of HeLa cell lines, using BCL2L1 antibody. The lane on the left is treated with the antigen-specific peptide.

Background

The protein encoded by this gene belongs to the BCL-2 protein family. BCL-2 family members form hetero- or homodimers and act as anti- or pro-apoptotic regulators that are involved in a wide variety of cellular activities. The proteins encoded by this gene are located at the outer mitochondrial membrane, and have been shown to regulate outer mitochondrial membrane channel (VDAC) opening. VDAC regulates mitochondrial membrane potential, and thus controls the production of reactive oxygen species and release of cytochrome C by mitochondria, both of which are the potent inducers of cell apoptosis. Two alternatively spliced transcript variants, which encode distinct isoforms, have been reported. The longer isoform

acts as an apoptotic inhibitor and the shorter form acts as an apoptotic activator. [provided by RefSeq]

Note: This product is for in vitro research use only