

## Claudin 4 (Phospho-Tyr208) Antibody

Catalog No: #12587



Package Size: #12587-1 50ul #12587-2 100ul

Orders: [order@signalwayantibody.com](mailto:order@signalwayantibody.com)Support: [tech@signalwayantibody.com](mailto:tech@signalwayantibody.com)

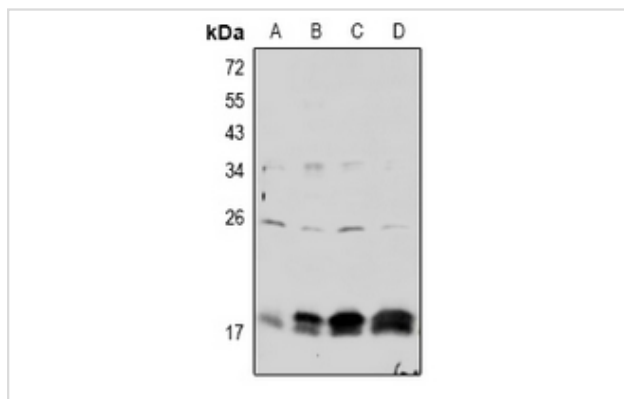
## Description

Product Name	Claudin 4 (Phospho-Tyr208) Antibody
Host Species	Rabbit
Clonality	Polyclonal
Purification	Antibodies were produced by immunizing rabbits with synthetic phosphopeptide and KLH conjugates. Antibodies were purified by affinity-chromatography using epitope-specific phosphopeptide. Non-phospho specific antibodies were removed by chromatography using non-phosphopeptide.
Applications	WB, IH, ELISA
Species Reactivity	Hu
Specificity	Claudin 4 (Phospho-Tyr208) Antibody detects endogenous levels of Claudin 4 only when phosphorylated at Tyr208
Immunogen Type	Peptide
Immunogen Description	A synthesized peptide derived from human Claudin 4 (Phospho-Tyr208)
Target Name	Claudin 4
Modification	Phospho
Other Names	CLDN4, Claudin-4, CPE-receptor, CPETR, CPETR1, Claudin 4, CPE-R, HCPE-R, WBSCR8, CPER
Accession No.	Swiss-Prot#: O14493NCBI Gene ID: 1364
Uniprot	O14493
GeneID	1364;
Target Species	human
Calculated MW	22kd
Concentration	1.0mg/ml
Formulation	Liquid in 0.42% Potassium phosphate, 0.87% Sodium chloride, pH 7.3, 30% glycerol, and 0.01% sodium azide.
Storage	Store at -20°C

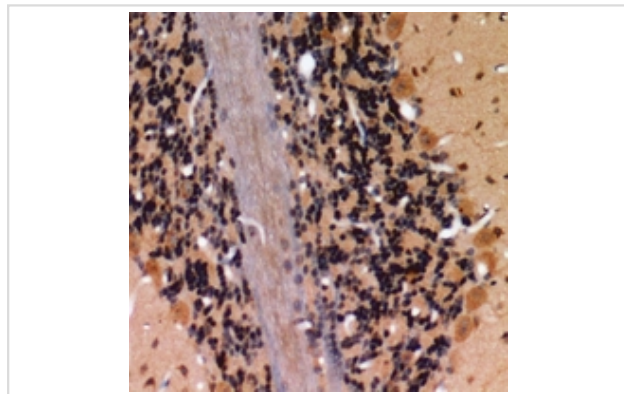
## Application Details

WB (1/500 - 1/1000), IH (1/50 - 1/100)

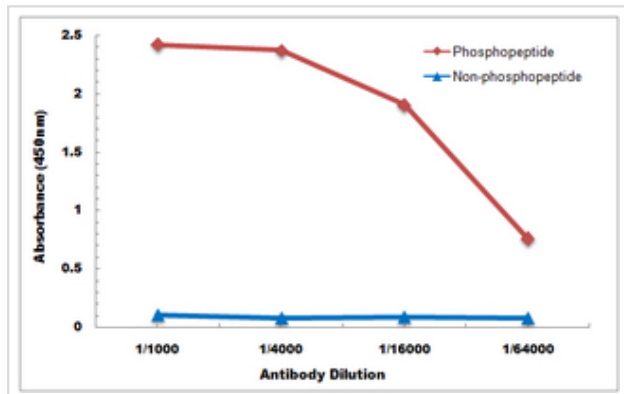
## Images



Western blot analysis of Claudin 4 (pY208) expression in mouse embryo (A), rat ovary (B), Panc1 (C), HCT116 (D) whole cell lysates.



Immunohistochemical analysis of Claudin 4 (pY208) staining in human brain formalin fixed paraffin embedded tissue section. The section was pre-treated using heat mediated antigen retrieval with sodium citrate buffer (pH 6.0). The section was then incubated with the antibody at room temperature and detected using an HRP conjugated compact polymer system. DAB was used as the chromogen. The section was then counterstained with haematoxylin and mounted with DPX.



Direct ELISA antibody dose-response curve using Anti-Claudin 4 (pY208) Antibody. Antigen (phosphopeptide and non-phosphopeptide) concentration is 5 ug/ml. Goat Anti-Rabbit IgG (H&L) - HRP was used as the secondary antibody, and signal was developed by TMB substrate.

Note: This product is for in vitro research use only