

CRMP-1 (Phospho-Tyr504) Antibody

Catalog No: #12588



Package Size: #12588-1 50ul #12588-2 100ul

Orders: order@signalwayantibody.comSupport: tech@signalwayantibody.com

Description

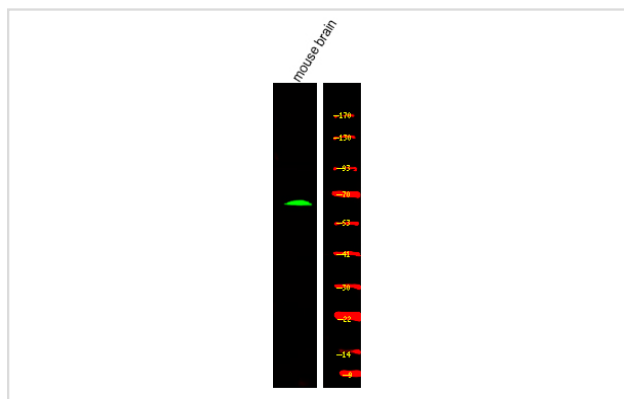
Product Name	CRMP-1 (Phospho-Tyr504) Antibody
Host Species	Rabbit
Clonality	Polyclonal
Purification	Antibodies were produced by immunizing rabbits with synthetic phosphopeptide and KLH conjugates. Antibodies were purified by affinity-chromatography using epitope-specific phosphopeptide. Non-phospho specific antibodies were removed by chromatography using non-phosphopeptide.
Applications	WB
Species Reactivity	Hu Ms Rt
Specificity	CRMP-1 (Phospho-Tyr504) Antibody detects endogenous levels of CRMP-1 only when phosphorylated at Tyr504
Immunogen Type	Peptide
Immunogen Description	A synthesized peptide derived from human CRMP-1 (Phospho-Tyr504)
Target Name	CRMP-1
Modification	Phospho
Other Names	CRMP1, DPYSL1, CRMP-1, DRP-1, Dihydropyrimidinase-like 1, DRP1, ULIP3, Unc-33-like phosphoprotein 3, ULIP-3
Accession No.	Swiss-Prot#: Q14194NCBI Gene ID: 1400
Uniprot	Q14194
GeneID	1400;
Target Species	human
Calculated MW	62kd
Concentration	1.0mg/ml
Formulation	Rabbit IgG in phosphate buffered saline (without Mg ²⁺ and Ca ²⁺), pH 7.4, 150mM NaCl, 0.02% sodium azide and 50% glycerol.
Storage	Store at -20°C

Application Details

Western blotting: 1:1000

Images

Western Blot analysis of lysates of mouse brain, using primary antibody at 1:1000 dilution.



Note: This product is for in vitro research use only