

## CtBP1/2 (Phospho-Ser158/164) Antibody

Catalog No: #12589

Package Size: #12589-1 50ul #12589-2 100ul

Orders: [order@signalwayantibody.com](mailto:order@signalwayantibody.com)Support: [tech@signalwayantibody.com](mailto:tech@signalwayantibody.com)

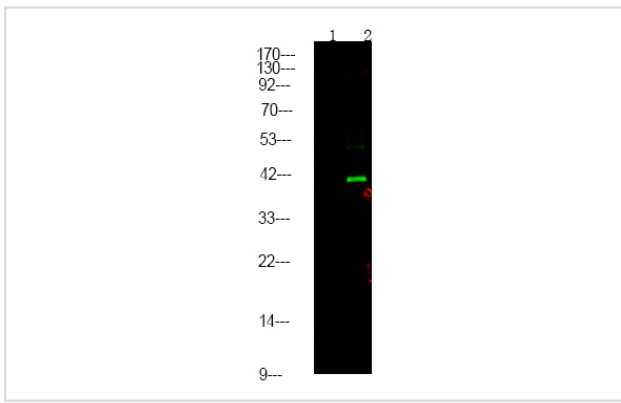
## Description

Product Name	CtBP1/2 (Phospho-Ser158/164) Antibody
Host Species	Rabbit
Clonality	Polyclonal
Purification	Antibodies were produced by immunizing rabbits with synthetic phosphopeptide and KLH conjugates. Antibodies were purified by affinity-chromatography using epitope-specific phosphopeptide. Non-phospho specific antibodies were removed by chromatography using non-phosphopeptide.
Applications	WB
Species Reactivity	Hu
Specificity	CtBP1/2 (Phospho-Ser158/164) Antibody detects endogenous levels of CtBP1/2 only when phosphorylated at Ser158/164
Immunogen Type	Peptide
Immunogen Description	A synthesized peptide derived from human CtBP1/2 (Phospho-Ser158/164)
Target Name	CtBP1/2
Modification	Phospho
Other Names	CTBP1, BARS, C-terminal binding protein 1, C-terminal-binding protein 1, CTBP
Accession No.	Swiss-Prot#: Q13363/P56545NCBI Gene ID: 1487/1488
Uniprot	Q13363
GeneID	1487;
Target Species	human
Calculated MW	48kd
Concentration	1.0mg/ml
Formulation	Rabbit IgG in phosphate buffered saline (without Mg <sup>2+</sup> and Ca <sup>2+</sup> ), pH 7.4, 150mM NaCl, 0.02% sodium azide and 50% glycerol.
Storage	Store at -20°C

## Application Details

Western blotting: 1:1000

## Images



Western Blot analysis of lysates of 1. HepG2 cell and 2. HepG2 cell treated with 100ng/mL LPS for 30min, using primary antibody at 1:1000 dilution.

Note: This product is for in vitro research use only