

## CTNND1 (Phospho-Tyr257) Antibody

Catalog No: #12590



Package Size: #12590-1 50ul #12590-2 100ul

Orders: [order@signalwayantibody.com](mailto:order@signalwayantibody.com)Support: [tech@signalwayantibody.com](mailto:tech@signalwayantibody.com)

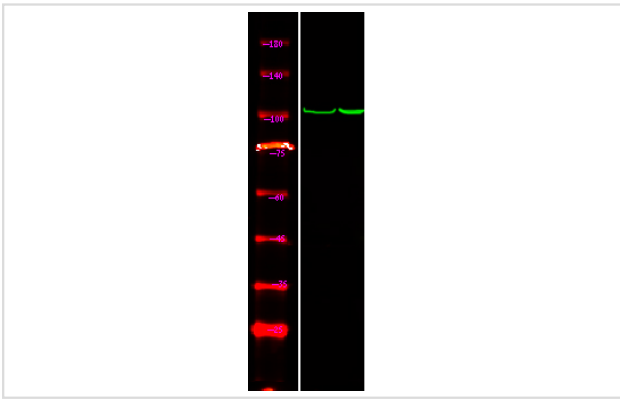
## Description

Product Name	CTNND1 (Phospho-Tyr257) Antibody
Host Species	Rabbit
Clonality	Polyclonal
Purification	Antibodies were produced by immunizing rabbits with synthetic phosphopeptide and KLH conjugates. Antibodies were purified by affinity-chromatography using epitope-specific phosphopeptide. Non-phospho specific antibodies were removed by chromatography using non-phosphopeptide.
Applications	WB
Species Reactivity	Hu Ms
Specificity	CTNND1 (Phospho-Tyr257) Antibody detects endogenous levels of CTNND1 only when phosphorylated at Tyr257
Immunogen Type	Peptide
Immunogen Description	A synthesized peptide derived from human CTNND1 (Phospho-Tyr257)
Target Name	CTNND1
Modification	Phospho
Other Names	CTNND1, CAS, Catenin delta-1, CTNND, KIAA0384, p120, p120(CAS), p120(CTN), p120CAS, p120CTN, p120 catenin
Accession No.	Swiss-Prot#: O60716NCBI Gene ID: 1500
Uniprot	O60716
GeneID	1500;
Target Species	human
Calculated MW	105kd
Concentration	1.0mg/ml
Formulation	Rabbit IgG in phosphate buffered saline (without Mg <sup>2+</sup> and Ca <sup>2+</sup> ), pH 7.4, 150mM NaCl, 0.02% sodium azide and 50% glycerol.
Storage	Store at -20°C

## Application Details

Western blotting: 1:1000

## Images



Western Blot analysis of lysates of HepG2 cell (Left) and HepG2 cell treated with 100ng/mL LPS for 30min (Right), using primary antibody at 1:1000 dilution.

Note: This product is for in vitro research use only