

Connexin 43 (Phospho-Ser373) Antibody

Catalog No: #12594

Package Size: #12594-1 50ul #12594-2 100ul

Orders: order@signalwayantibody.comSupport: tech@signalwayantibody.com

Description

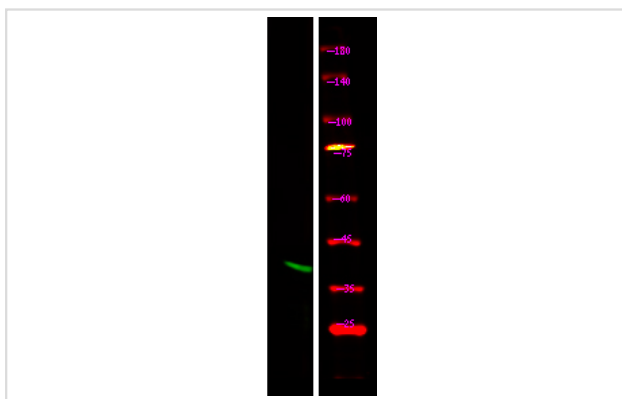
Product Name	Connexin 43 (Phospho-Ser373) Antibody
Host Species	Rabbit
Clonality	Polyclonal
Purification	Antibodies were produced by immunizing rabbits with synthetic phosphopeptide and KLH conjugates. Antibodies were purified by affinity-chromatography using epitope-specific phosphopeptide. Non-phospho specific antibodies were removed by chromatography using non-phosphopeptide.
Applications	WB
Species Reactivity	Hu Ms Rt
Specificity	Connexin 43 (Phospho-Ser373) Antibody detects endogenous levels of Connexin 43 only when phosphorylated at Ser373
Immunogen Type	Peptide
Immunogen Description	A synthesized peptide derived from human Connexin 43 (Phospho-Ser373)
Target Name	Connexin 43
Modification	Phospho
Other Names	GJA1, Connexin-43, DFNB38, Connexin 43, Gap junction alpha-1 protein, GJAL, HSS, Gap junction protein alpha 1, ODDD, ODD, AVSD3, CX43, HLHS1, ODOD, SDTY3
Accession No.	Swiss-Prot#: P17302NCBI Gene ID: 2697
Uniprot	P17302
GeneID	2697;
Target Species	human
Calculated MW	43kd
Concentration	1.0mg/ml
Formulation	Liquid in PBS containing 50% glycerol, 0.5% BSA and 0.02% sodium azide.
Storage	Store at -20°C

Application Details

Western blotting: 1:1000

Images

Western Blot analysis of lysates of 1. Hela cell and 2. Hela cell Serum-free treated, using primary antibody at 1:1000 dilution.



Note: This product is for in vitro research use only