

Cyclin D1 (Phospho-Thr288) Antibody

Catalog No: #12597



Package Size: #12597-1 50ul #12597-2 100ul

Orders: order@signalwayantibody.comSupport: tech@signalwayantibody.com

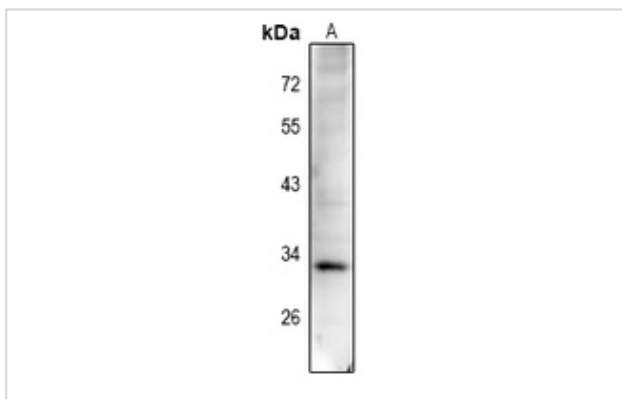
Description

Product Name	Cyclin D1 (Phospho-Thr288) Antibody
Host Species	Rabbit
Clonality	Polyclonal
Purification	Antibodies were produced by immunizing rabbits with synthetic phosphopeptide and KLH conjugates. Antibodies were purified by affinity-chromatography using epitope-specific phosphopeptide. Non-phospho specific antibodies were removed by chromatography using non-phosphopeptide.
Applications	WB
Species Reactivity	Hu Ms Rt
Specificity	Cyclin D1 (Phospho-Thr288) Antibody detects endogenous levels of Cyclin D1 only when phosphorylated at Thr288
Immunogen Type	Peptide
Immunogen Description	A synthesized peptide derived from human Cyclin D1 (Phospho-Thr288)
Target Name	Cyclin D1
Modification	Phospho
Other Names	CCND1, B-cell lymphoma 1 protein, BCL-1 oncogene, B-cell CLL/lymphoma 1, BCL-1, Cyclin D1, G1/S-specific cyclin-D1, U21B31, PRAD1, BCL1, D11S287E, PRAD1 oncogene
Accession No.	Swiss-Prot#: P24385NCBI Gene ID: 595
Uniprot	P24385
GeneID	595;
Target Species	human
Calculated MW	33kd
Concentration	1.0mg/ml
Formulation	Liquid in 0.42% Potassium phosphate, 0.87% Sodium chloride, pH 7.3, 30% glycerol, and 0.01% sodium azide.
Storage	Store at -20°C

Application Details

WB (1/500 - 1/1000)

Images



Western blot analysis of Cyclin D1 (pT288) expression in HCT116 (A) whole cell lysates.

Note: This product is for in vitro research use only