

## DSCR1 (Phospho-Ser108) Antibody

Catalog No: #12598



Package Size: #12598-1 50ul #12598-2 100ul

Orders: [order@signalwayantibody.com](mailto:order@signalwayantibody.com)Support: [tech@signalwayantibody.com](mailto:tech@signalwayantibody.com)

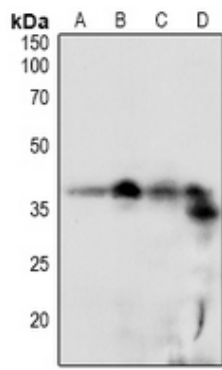
## Description

Product Name	DSCR1 (Phospho-Ser108) Antibody
Host Species	Rabbit
Clonality	Polyclonal
Purification	Antibodies were produced by immunizing rabbits with synthetic phosphopeptide and KLH conjugates. Antibodies were purified by affinity-chromatography using epitope-specific phosphopeptide. Non-phospho specific antibodies were removed by chromatography using non-phosphopeptide.
Applications	WB
Species Reactivity	Hu Ms Rt
Specificity	DSCR1 (Phospho-Ser108) Antibody detects endogenous levels of DSCR1 only when phosphorylated at Ser108
Immunogen Type	Peptide
Immunogen Description	A synthesized peptide derived from human DSCR1 (Phospho-Ser108)
Target Name	DSCR1
Modification	Phospho
Other Names	RCAN1, ADAPT78, DSCR1, MCIP1, Regulator of calcineurin 1, Calcipressin-1, CSP1, Near DSCR proline-rich protein
Accession No.	Swiss-Prot#: P53805NCBI Gene ID: 1827
Uniprot	P53805
GeneID	1827;
Target Species	human
Calculated MW	22kd
Concentration	1.0mg/ml
Formulation	Liquid in 0.42% Potassium phosphate, 0.87% Sodium chloride, pH 7.3, 30% glycerol, and 0.01% sodium azide.
Storage	Store at -20°C

## Application Details

WB (1/500 - 1/1000)

## Images



Western blot analysis of DSCR1 (pS108) expression in HEK293T (A), Jurkat (B), NIH3T3 (C), CT26 (D) whole cell lysates.

Note: This product is for in vitro research use only