

## FKHR (Phospho-Ser249) Antibody

Catalog No: #12600



Package Size: #12600-1 50ul #12600-2 100ul

Orders: [order@signalwayantibody.com](mailto:order@signalwayantibody.com)Support: [tech@signalwayantibody.com](mailto:tech@signalwayantibody.com)

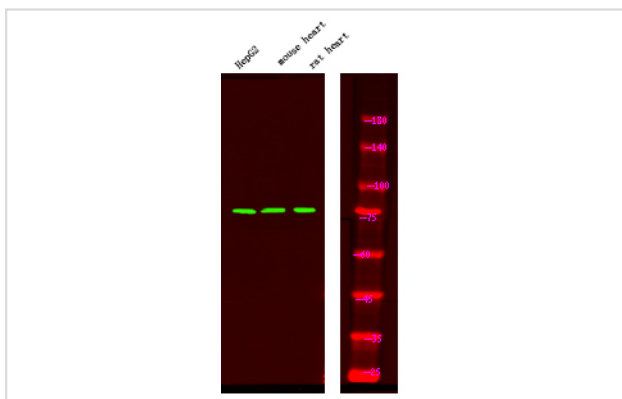
## Description

Product Name	FKHR (Phospho-Ser249) Antibody
Host Species	Rabbit
Clonality	Polyclonal
Purification	Antibodies were produced by immunizing rabbits with synthetic phosphopeptide and KLH conjugates. Antibodies were purified by affinity-chromatography using epitope-specific phosphopeptide. Non-phospho specific antibodies were removed by chromatography using non-phosphopeptide.
Applications	WB
Species Reactivity	Hu Ms Rt
Specificity	FKHR (Phospho-Ser249) Antibody detects endogenous levels of FKHR only when phosphorylated at Ser249
Immunogen Type	Peptide
Immunogen Description	A synthesized peptide derived from human FKHR (Phospho-Ser249)
Target Name	FKHR
Modification	Phospho
Other Names	FOXO1, FKHR, Forkhead in rhabdomyosarcoma, FOXO1A, FKH1, Forkhead box protein O1, Forkhead box protein O1A, Forkhead box O1, Forkhead box o1a, Forkhead domain protein fchr
Accession No.	Swiss-Prot#: Q12778NCBI Gene ID: 2308
Uniprot	Q12778
GeneID	2308;
Target Species	human
Calculated MW	78kd
Concentration	1.0mg/ml
Formulation	Rabbit IgG in phosphate buffered saline (without Mg <sup>2+</sup> and Ca <sup>2+</sup> ), pH 7.4, 150mM NaCl, 0.02% sodium azide and 50% glycerol.
Storage	Store at -20°C

## Application Details

Western blotting: 1:1000

## Images



Western Blot analysis of lysates of HepG2 cell, mouse heart tissue and rat heart tissue, using primary antibody at 1:1000 dilution.

Note: This product is for in vitro research use only