

FKHRL1 (Phospho-Ser321) Antibody

Catalog No: #12602



Package Size: #12602-1 50ul #12602-2 100ul

Orders: order@signalwayantibody.comSupport: tech@signalwayantibody.com

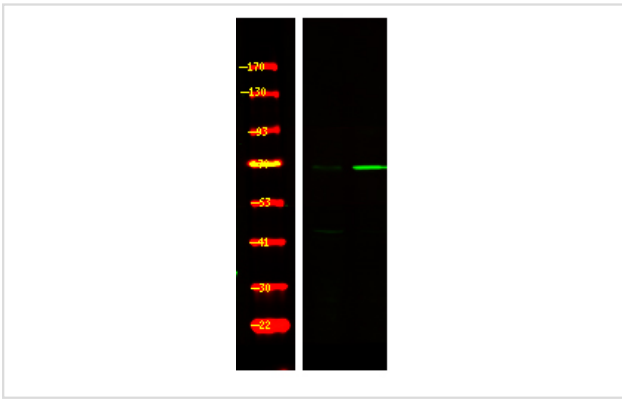
Description

Product Name	FKHRL1 (Phospho-Ser321) Antibody
Host Species	Rabbit
Clonality	Polyclonal
Purification	Antibodies were produced by immunizing rabbits with synthetic phosphopeptide and KLH conjugates. Antibodies were purified by affinity-chromatography using epitope-specific phosphopeptide. Non-phospho specific antibodies were removed by chromatography using non-phosphopeptide.
Applications	WB
Species Reactivity	Hu Ms Rt
Specificity	FKHRL1 (Phospho-Ser321) Antibody detects endogenous levels of FKHRL1 only when phosphorylated at Ser321
Immunogen Type	Peptide
Immunogen Description	A synthesized peptide derived from human FKHRL1 (Phospho-Ser321)
Target Name	FKHRL1
Modification	Phospho
Other Names	FOXO3, AF6q21, AF6q21 protein, Forkhead box O3, Forkhead box O3A, FOXO3A, FKHRL1P2, Forkhead box protein O3, FOXO2, FKHRL1
Accession No.	Swiss-Prot#: O43524NCBI Gene ID: 2309
Uniprot	O43524
GeneID	2309;
Target Species	human
Calculated MW	97kd
Concentration	1.0mg/ml
Formulation	Rabbit IgG in phosphate buffered saline (without Mg ²⁺ and Ca ²⁺), pH 7.4, 150mM NaCl, 0.02% sodium azide and 50% glycerol.
Storage	Store at -20°C

Application Details

Western blotting: 1:1000

Images



Western Blot analysis of lysates of A549 cell (Left) and A549 cell treated with 100ng/mL LPS for 30min (Right), using primary antibody at 1:1000 dilution.

Note: This product is for in vitro research use only