

## JDP-2 (Phospho-Thr148) Antibody

Catalog No: #12605

Package Size: #12605-1 50ul #12605-2 100ul

Orders: [order@signalwayantibody.com](mailto:order@signalwayantibody.com)Support: [tech@signalwayantibody.com](mailto:tech@signalwayantibody.com)

## Description

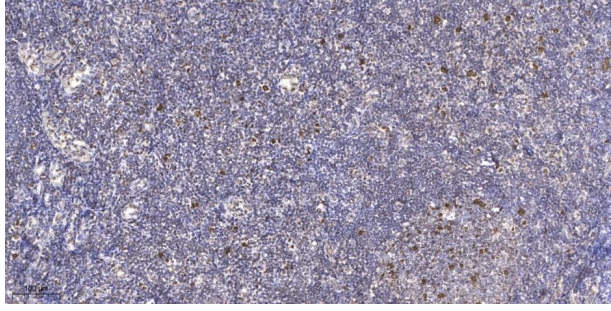
Product Name	JDP-2 (Phospho-Thr148) Antibody
Host Species	Rabbit
Clonality	Polyclonal
Purification	The antibody was affinity-purified from rabbit antiserum by affinity-chromatography using epitope-specific immunogen.
Applications	IHC IF
Species Reactivity	Hu Ms Rt
Specificity	JDP-2 (Phospho-Thr148) Antibody detects endogenous levels of JDP-2 only when phosphorylated at Thr148
Immunogen Type	Peptide
Immunogen Description	The antiserum was produced against synthesized peptide derived from human JDP-2 around the phosphorylation site of Thr148.
Target Name	JDP-2
Modification	Phospho
Other Names	JDP2, Jun dimerization protein 2, JUNDM2
Accession No.	Swiss-Prot#: Q8WYK2NCBI Gene ID: 122953
Uniprot	Q8WYK2
GeneID	122953;
Target Species	human
Calculated MW	19kd
Concentration	1.0mg/ml
Formulation	Liquid in PBS containing 50% glycerol, 0.5% BSA and 0.02% sodium azide.
Storage	Store at -20°C

## Application Details

IHC 1:100-1:300

IF 1:50-200

## Images



Immunohistochemical analysis of paraffin-embedded human tonsil. 1, Antibody was diluted at 1:200(4° overnight). 2, Tris-EDTA,pH9.0 was used for antigen retrieval. 3,Secondary antibody was diluted at 1:200(room temperature, 45min).

---

Note: This product is for in vitro research use only