

LAB (Phospho-Tyr136) Antibody

Catalog No: #12607



Package Size: #12607-1 50ul #12607-2 100ul

Orders: order@signalwayantibody.comSupport: tech@signalwayantibody.com

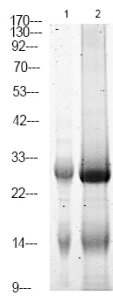
Description

Product Name	LAB (Phospho-Tyr136) Antibody
Host Species	Rabbit
Clonality	Polyclonal
Purification	Antibodies were produced by immunizing rabbits with synthetic phosphopeptide and KLH conjugates. Antibodies were purified by affinity-chromatography using epitope-specific phosphopeptide. Non-phospho specific antibodies were removed by chromatography using non-phosphopeptide.
Applications	WB
Species Reactivity	Hu Ms Rt
Specificity	LAB (Phospho-Tyr136) Antibody detects endogenous levels of LAB only when phosphorylated at Tyr136
Immunogen Type	Peptide
Immunogen Description	A synthesized peptide derived from human LAB (Phospho-Tyr136)
Target Name	LAB
Modification	Phospho
Other Names	LAT2, HSPC046, Non-T-cell activation linker, NTAL, LAB, WBSCR15, WBS15, WBSCR5, WSCR5
Accession No.	Swiss-Prot#: Q9GZY6NCBI Gene ID: 7462
Uniprot	Q9GZY6
GeneID	7462;
Target Species	human
Calculated MW	26kd
Concentration	1.0mg/ml
Formulation	Rabbit IgG in phosphate buffered saline (without Mg ²⁺ and Ca ²⁺), pH 7.4, 150mM NaCl, 0.02% sodium azide and 50% glycerol.
Storage	Store at -20°C

Application Details

Western blotting: 1:1000

Images



Western Blot analysis of lysates of 1. HepG2 cell and 2. HepG2 cell Serum-free treated, using primary antibody at 1:1000 dilution.

Note: This product is for in vitro research use only