

NACA (Phospho-Ser43) Antibody

Catalog No: #12617



Package Size: #12617-1 50ul #12617-2 100ul

Orders: order@signalwayantibody.comSupport: tech@signalwayantibody.com

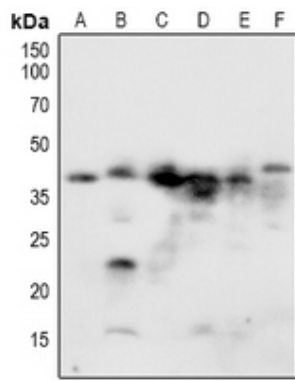
Description

Product Name	NACA (Phospho-Ser43) Antibody
Host Species	Rabbit
Clonality	Polyclonal
Purification	Antibodies were produced by immunizing rabbits with synthetic phosphopeptide and KLH conjugates. Antibodies were purified by affinity-chromatography using epitope-specific phosphopeptide. Non-phospho specific antibodies were removed by chromatography using non-phosphopeptide.
Applications	WB, IH
Species Reactivity	Hu Ms Rt
Specificity	NACA (Phospho-Ser43) Antibody detects endogenous levels of NACA only when phosphorylated at Ser43
Immunogen Type	Peptide
Immunogen Description	A synthesized peptide derived from human NACA (Phospho-Ser43)
Target Name	NACA
Modification	Phospho
Other Names	NACA, Allergen Hom s 2, Alpha-NAC, HSD48, NAC-alpha, NACA1
Accession No.	Swiss-Prot#: Q13765NCBI Gene ID: 4666
Uniprot	Q13765
GeneID	4666;
Target Species	human
Calculated MW	24kd
Concentration	1.0mg/ml
Formulation	Liquid in 0.42% Potassium phosphate, 0.87% Sodium chloride, pH 7.3, 30% glycerol, and 0.01% sodium azide.
Storage	Store at -20°C

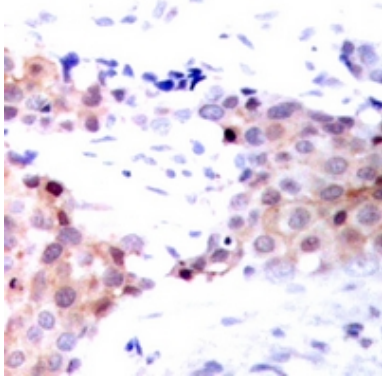
Application Details

WB (1/500 - 1/1000), IH (1/50 - 1/100)

Images



Western blot analysis of NACA1 (pS43) expression in HEK293T (A), Jurkat (B), NIH3T3 (C), CT26 (D), H9C2 (E), PC12 (F) whole cell lysates.



Immunohistochemical analysis of NACA1 (pS43) staining in human breast cancer formalin fixed paraffin embedded tissue section. The section was pre-treated using heat mediated antigen retrieval with sodium citrate buffer (pH 6.0). The section was then incubated with the antibody at room temperature and detected using an HRP conjugated compact polymer system. DAB was used as the chromogen. The section was then counterstained with haematoxylin and mounted with DPX.

Note: This product is for in vitro research use only