

NDRG2 (Phospho-Thr348) Antibody

Catalog No: #12619



Package Size: #12619-1 50ul #12619-2 100ul

Orders: order@signalwayantibody.comSupport: tech@signalwayantibody.com

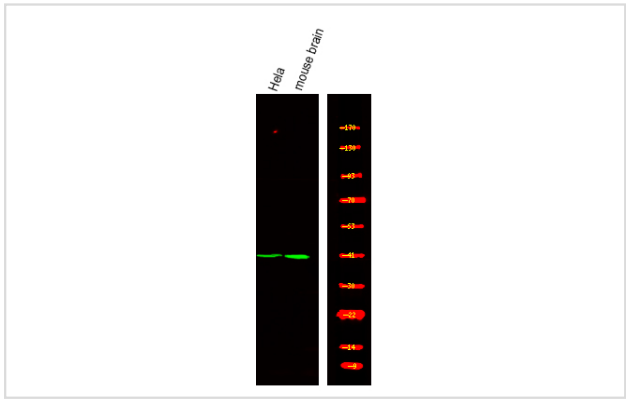
Description

Product Name	NDRG2 (Phospho-Thr348) Antibody
Host Species	Rabbit
Clonality	Polyclonal
Purification	Antibodies were produced by immunizing rabbits with synthetic phosphopeptide and KLH conjugates. Antibodies were purified by affinity-chromatography using epitope-specific phosphopeptide. Non-phospho specific antibodies were removed by chromatography using non-phosphopeptide.
Applications	WB
Species Reactivity	Hu Ms Rt
Specificity	NDRG2 (Phospho-Thr348) Antibody detects endogenous levels of NDRG2 only when phosphorylated at Thr348
Immunogen Type	Peptide
Immunogen Description	A synthesized peptide derived from human NDRG2 (Phospho-Thr348)
Target Name	NDRG2
Modification	Phospho
Other Names	NDRG2, KIAA1248, N-myc downstream regulator 2, NDRG family member 2, SYLD, NDR1-related protein NDR2, Protein Syld709613, Syld709613 protein, Cytoplasmic protein Ndr1, Protein NDRG2
Accession No.	Swiss-Prot#: Q9UN36NCBI Gene ID: 57447
Uniprot	Q9UN36
GeneID	57447;
Target Species	human
Calculated MW	41kd
Concentration	1.0mg/ml
Formulation	Rabbit IgG in phosphate buffered saline (without Mg ²⁺ and Ca ²⁺), pH 7.4, 150mM NaCl, 0.02% sodium azide and 50% glycerol.
Storage	Store at -20°C

Application Details

Western blotting: 1:1000

Images



Western Blot analysis of lysates of HeLa and mouse brain, using primary antibody at 1:1000 dilution.

Note: This product is for in vitro research use only