

## p21 Cip1 (Phospho-Ser129) Antibody

Catalog No: #12621



Package Size: #12621-1 50ul #12621-2 100ul

Orders: [order@signalwayantibody.com](mailto:order@signalwayantibody.com)Support: [tech@signalwayantibody.com](mailto:tech@signalwayantibody.com)

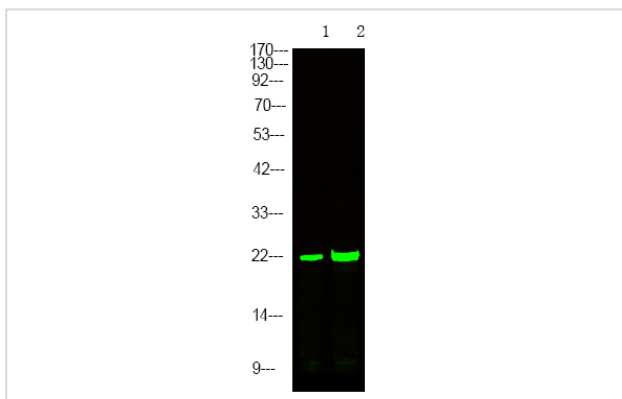
## Description

Product Name	p21 Cip1 (Phospho-Ser129) Antibody
Host Species	Rabbit
Clonality	Polyclonal
Purification	Antibodies were produced by immunizing rabbits with synthetic phosphopeptide and KLH conjugates. Antibodies were purified by affinity-chromatography using epitope-specific phosphopeptide. Non-phospho specific antibodies were removed by chromatography using non-phosphopeptide.
Applications	WB
Species Reactivity	Hu
Specificity	p21 Cip1 (Phospho-Ser129) Antibody detects endogenous levels of p21 Cip1 only when phosphorylated at Ser129
Immunogen Type	Peptide
Immunogen Description	A synthesized peptide derived from human p21 Cip1 (Phospho-Ser129)
Target Name	p21 Cip1
Modification	Phospho
Other Names	CDKN1A, CDKN1, CIP1, CDK-interacting protein 1, DNA synthesis inhibitor, p21CIP1, MDA6, PIC1, SDI1, WAF1, CAP20, CDK-interaction protein 1, MDA-6, p21
Accession No.	Swiss-Prot#: P38936NCBI Gene ID: 1026
Uniprot	P38936
GeneID	1026;
Target Species	human
Calculated MW	21kd
Concentration	1.0mg/ml
Formulation	Rabbit IgG in phosphate buffered saline (without Mg <sup>2+</sup> and Ca <sup>2+</sup> ), pH 7.4, 150mM NaCl, 0.02% sodium azide and 50% glycerol.
Storage	Store at -20°C

## Application Details

Western blotting: 1:1000

## Images



Western Blot analysis of lysates of 1. Hela cell and 2. Hela cell treated with 100ng/mL LPS for 30min, using primary antibody at 1:1000 dilution.

Note: This product is for in vitro research use only