

PDX1 (Phospho-Ser66) Antibody

Catalog No: #12626

Package Size: #12626-1 50ul #12626-2 100ul

Orders: order@signalwayantibody.comSupport: tech@signalwayantibody.com

Description

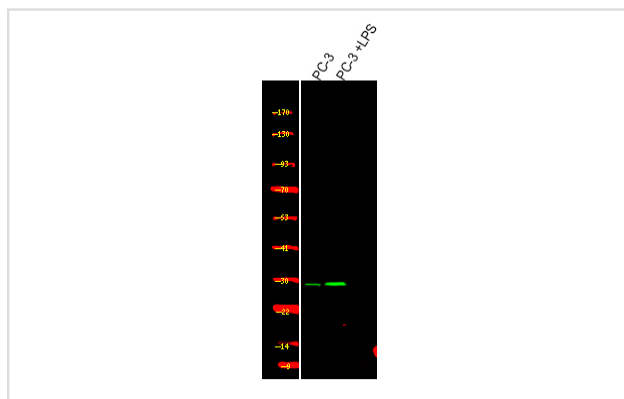
Product Name	PDX1 (Phospho-Ser66) Antibody
Host Species	Rabbit
Clonality	Polyclonal
Purification	Antibodies were produced by immunizing rabbits with synthetic phosphopeptide and KLH conjugates. Antibodies were purified by affinity-chromatography using epitope-specific phosphopeptide. Non-phospho specific antibodies were removed by chromatography using non-phosphopeptide.
Applications	WB
Species Reactivity	Hu Ms Rt
Specificity	PDX1 (Phospho-Ser66) Antibody detects endogenous levels of PDX1 only when phosphorylated at Ser66
Immunogen Type	Peptide
Immunogen Description	A synthesized peptide derived from human PDX1 (Phospho-Ser66)
Target Name	PDX1
Modification	Phospho
Other Names	PDX1, Glucose-sensitive factor, Insulin upstream factor 1, IPF1, Insulin promoter factor 1, IPF-1, IUF-1, STF-1, GSF, IDX-1, Islet/duodenum homeobox-1, IUF1, MODY4, PDX-1
Accession No.	Swiss-Prot#: P52945NCBI Gene ID: 3651
Uniprot	P52945
GeneID	3651;
Target Species	human
Calculated MW	31kd
Concentration	1.0mg/ml
Formulation	Rabbit IgG in phosphate buffered saline (without Mg ²⁺ and Ca ²⁺), pH 7.4, 150mM NaCl, 0.02% sodium azide and 50% glycerol.
Storage	Store at -20°C

Application Details

Western blotting: 1:1000

Images

Western Blot analysis of lysates of PC-3 and PC-3 treated with LPS, using primary antibody at 1:1000 dilution.



Note: This product is for in vitro research use only