

PSEN1 (Phospho-Ser353) Antibody

Catalog No: #12629



Package Size: #12629-1 50ul #12629-2 100ul

Orders: order@signalwayantibody.comSupport: tech@signalwayantibody.com

Description

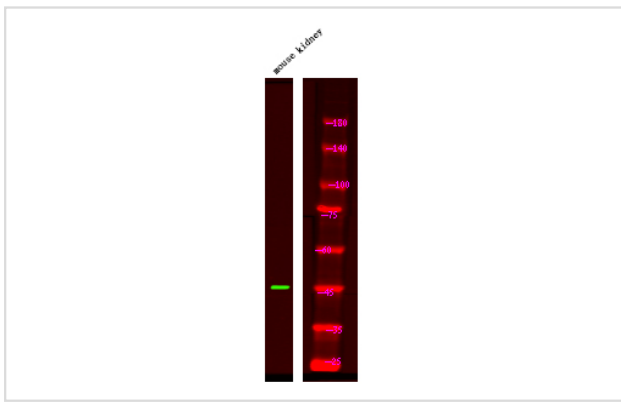
Product Name	PSEN1 (Phospho-Ser353) Antibody
Host Species	Rabbit
Clonality	Polyclonal
Purification	Antibodies were produced by immunizing rabbits with synthetic phosphopeptide and KLH conjugates. Antibodies were purified by affinity-chromatography using epitope-specific phosphopeptide. Non-phospho specific antibodies were removed by chromatography using non-phosphopeptide.
Applications	WB
Species Reactivity	Hu Ms Rt
Specificity	PSEN1 (Phospho-Ser353) Antibody detects endogenous levels of PSEN1 only when phosphorylated at Ser353
Immunogen Type	Peptide
Immunogen Description	A synthesized peptide derived from human PSEN1 (Phospho-Ser353)
Target Name	PSEN1
Modification	Phospho
Other Names	PSEN1, AD3, Alzheimer disease 3, FAD, Protein S182, PS1, S182, PS-1, PSNL1, Presenilin 1, Presenilin-1
Accession No.	Swiss-Prot#: P49768NCBI Gene ID: 5663
Uniprot	P49768
GeneID	5663;
Target Species	human
Calculated MW	60kd
Concentration	1.0mg/ml
Formulation	Rabbit IgG in phosphate buffered saline (without Mg ²⁺ and Ca ²⁺), pH 7.4, 150mM NaCl, 0.02% sodium azide and 50% glycerol.
Storage	Store at -20°C

Application Details

Western blotting: 1:1000

Images

Western Blot analysis of lysates of mouse kidney tissue, using primary antibody at 1:1000 dilution.



Note: This product is for in vitro research use only