

PTP1B (Phospho-Tyr66) Antibody

Catalog No: #12630

Package Size: #12630-1 50ul #12630-2 100ul

Orders: order@signalwayantibody.comSupport: tech@signalwayantibody.com

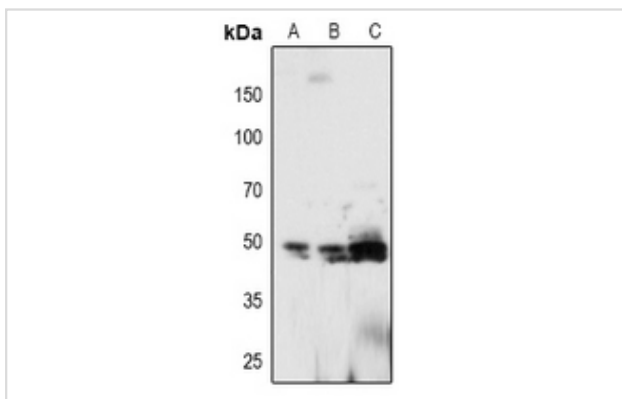
Description

| | |
|-----------------------|---|
| Product Name | PTP1B (Phospho-Tyr66) Antibody |
| Host Species | Rabbit |
| Clonality | Polyclonal |
| Purification | Antibodies were produced by immunizing rabbits with synthetic phosphopeptide and KLH conjugates. Antibodies were purified by affinity-chromatography using epitope-specific phosphopeptide. Non-phospho specific antibodies were removed by chromatography using non-phosphopeptide. |
| Applications | WB |
| Species Reactivity | Hu Ms Rt |
| Specificity | PTP1B (Phospho-Tyr66) Antibody detects endogenous levels of PTP1B only when phosphorylated at Tyr66 |
| Immunogen Type | Peptide |
| Immunogen Description | A synthesized peptide derived from human PTP1B (Phospho-Tyr66) |
| Target Name | PTP1B |
| Modification | Phospho |
| Other Names | PTPN1, PTP1B, PTP-1B, PTPase 1B |
| Accession No. | Swiss-Prot#: P18031NCBI Gene ID: 5770 |
| Uniprot | P18031 |
| GeneID | 5770; |
| Target Species | human |
| Calculated MW | 49kd |
| Concentration | 1.0mg/ml |
| Formulation | Liquid in 0.42% Potassium phosphate, 0.87% Sodium chloride, pH 7.3, 30% glycerol, and 0.01% sodium azide. |
| Storage | Store at -20°C |

Application Details

WB (1/500 - 1/1000)

Images



Western blot analysis of PTP1B (pY66) expression in MCF7 (A), A549 (B), mouse lung (C) whole cell lysates.

Note: This product is for in vitro research use only