

## RAD50 (Phospho-Ser635) Antibody

Catalog No: #12632



Package Size: #12632-1 50ul #12632-2 100ul

Orders: [order@signalwayantibody.com](mailto:order@signalwayantibody.com)Support: [tech@signalwayantibody.com](mailto:tech@signalwayantibody.com)

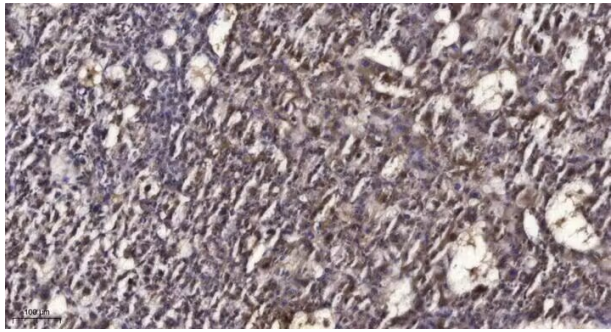
## Description

Product Name	RAD50 (Phospho-Ser635) Antibody
Host Species	Rabbit
Clonality	Polyclonal
Purification	Antibodies were produced by immunizing rabbits with synthetic phosphopeptide and KLH conjugates. Antibodies were purified by affinity-chromatography using epitope-specific phosphopeptide. Non-phospho specific antibodies were removed by chromatography using non-phosphopeptide.
Applications	WB;IHC
Species Reactivity	Hu Ms Rt
Specificity	RAD50 (Phospho-Ser635) Antibody detects endogenous levels of RAD50 only when phosphorylated at Ser635
Immunogen Type	Peptide
Immunogen Description	A synthesized peptide derived from human RAD50 (Phospho-Ser635)
Target Name	RAD50
Modification	Phospho
Other Names	RAD50, DNA repair protein RAD50, HRad50, NBSLD, RAD50 (S. cerevisiae) homolog, RAD50 homolog (S. cerevisiae), RAD502, RAD50-2
Accession No.	Swiss-Prot#: Q92878NCBI Gene ID: 10111
Uniprot	Q92878
GeneID	10111;
Target Species	human
Calculated MW	154kd
Concentration	1.0mg/ml
Formulation	Rabbit IgG in phosphate buffered saline (without Mg <sup>2+</sup> and Ca <sup>2+</sup> ), pH 7.4, 150mM NaCl, 0.02% sodium azide and 50% glycerol.
Storage	Store at -20°C

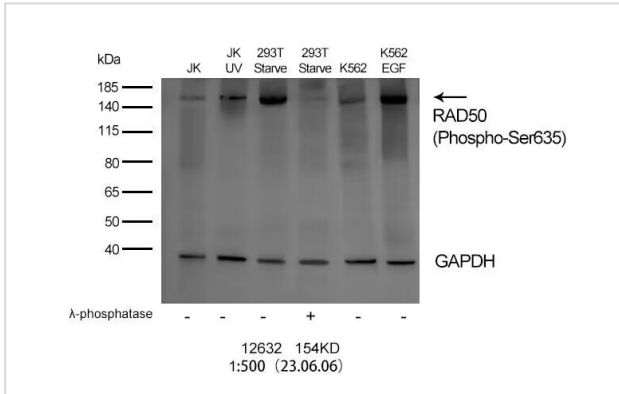
## Application Details

WB 1:500-2000;IHC-p 1:50-300

## Images



Immunohistochemical analysis of paraffin-embedded human liver cancer. 1, Antibody was diluted at 1:200(4° overnight). 2, Tris-EDTA,pH9.0 was used for antigen retrieval. 3,Secondary antibody was diluted at 1:200(room temperature, 45min)



Western Blot analysis of various cell lysates, using primary antibody at 1:500 dilution. Secondary antibody was diluted at 1:10000

Note: This product is for in vitro research use only