

## Shc3 (Phospho-Tyr424) Antibody

Catalog No: #12634

Package Size: #12634-1 50ul #12634-2 100ul

Orders: [order@signalwayantibody.com](mailto:order@signalwayantibody.com)Support: [tech@signalwayantibody.com](mailto:tech@signalwayantibody.com)

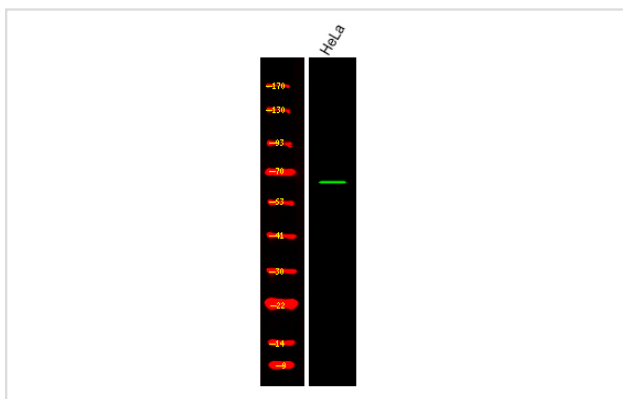
## Description

Product Name	Shc3 (Phospho-Tyr424) Antibody
Host Species	Rabbit
Clonality	Polyclonal
Purification	Antibodies were produced by immunizing rabbits with synthetic phosphopeptide and KLH conjugates. Antibodies were purified by affinity-chromatography using epitope-specific phosphopeptide. Non-phospho specific antibodies were removed by chromatography using non-phosphopeptide.
Applications	WB
Species Reactivity	Hu Ms Rt
Specificity	Shc3 (Phospho-Tyr424) Antibody detects endogenous levels of Shc3 only when phosphorylated at Tyr424
Immunogen Type	Peptide
Immunogen Description	A synthesized peptide derived from human Shc3 (Phospho-Tyr424)
Target Name	Shc3
Modification	Phospho
Other Names	SHC3, Neuronal Shc, NSHC, RAI, SH2 domain protein C3, SHC-transforming protein C, N-Shc, p52 and p64 isoforms of n-shc, Protein Rai, SHC-transforming protein 3, SHCC
Accession No.	Swiss-Prot#: Q92529NCBI Gene ID: 53358
Uniprot	Q92529
GeneID	53358;
Target Species	human
Calculated MW	64kd
Concentration	1.0mg/ml
Formulation	Rabbit IgG in phosphate buffered saline (without Mg <sup>2+</sup> and Ca <sup>2+</sup> ), pH 7.4, 150mM NaCl, 0.02% sodium azide and 50% glycerol.
Storage	Store at -20°C

## Application Details

Western blotting: 1:1000

## Images



Western Blot analysis of lysates of HeLa, using primary antibody at 1:1000 dilution.

---

Note: This product is for in vitro research use only