

Smad1/5/9 (Phospho-Ser463+Ser465) Antibody

Catalog No: #12635



Package Size: #12635-1 50ul #12635-2 100ul

Orders: order@signalwayantibody.comSupport: tech@signalwayantibody.com

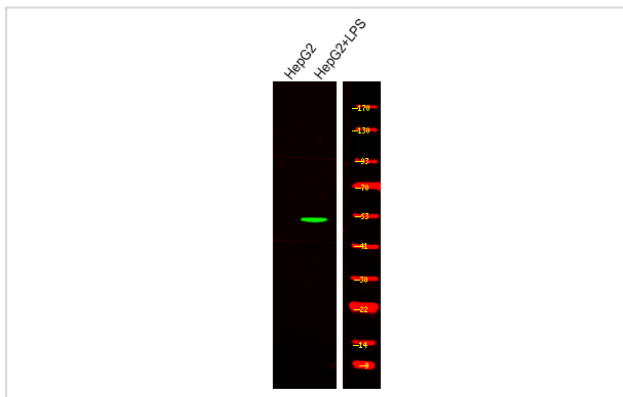
Description

Product Name	Smad1/5/9 (Phospho-Ser463+Ser465) Antibody
Host Species	Rabbit
Clonality	Polyclonal
Purification	Antibodies were produced by immunizing rabbits with synthetic phosphopeptide and KLH conjugates. Antibodies were purified by affinity-chromatography using epitope-specific phosphopeptide. Non-phospho specific antibodies were removed by chromatography using non-phosphopeptide.
Applications	WB
Species Reactivity	Hu Rt
Specificity	Smad1/5/9 (Phospho-Ser463+Ser465) Antibody detects endogenous levels of Smad1/5/9 only when phosphorylated at Ser463+Ser465
Immunogen Type	Peptide
Immunogen Description	A synthesized peptide derived from human Smad1/5/9 (Phospho-Ser463+Ser465)
Target Name	Smad1/5/9
Modification	Phospho
Other Names	Smad1/5/9 (Phospho-Ser463+Ser465) Antibody
Accession No.	Swiss-Prot#: Q15797/Q99717/O15198NCBI Gene ID: 4086/4090/4093
Uniprot	Q15797
GeneID	4086;
Target Species	human
Calculated MW	56kd
Concentration	1.0mg/ml
Formulation	Rabbit IgG in phosphate buffered saline (without Mg ²⁺ and Ca ²⁺), pH 7.4, 150mM NaCl, 0.02% sodium azide and 50% glycerol.
Storage	Store at -20°C

Application Details

Western blotting: 1:1000

Images



Western Blot analysis of lysates of HepG2 and HepG2 treated with LPS, using primary antibody at 1:1000 dilution.

Note: This product is for in vitro research use only