

SREBP-2 (Phospho-Ser455) Antibody

Catalog No: #12641



Package Size: #12641-1 50ul #12641-2 100ul

Orders: order@signalwayantibody.comSupport: tech@signalwayantibody.com

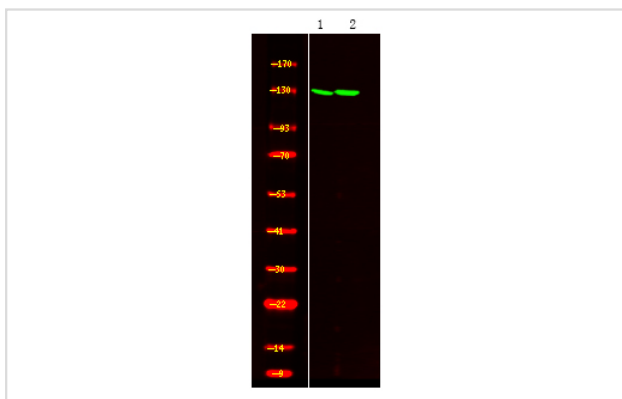
Description

Product Name	SREBP-2 (Phospho-Ser455) Antibody
Host Species	Rabbit
Clonality	Polyclonal
Purification	Antibodies were produced by immunizing rabbits with synthetic phosphopeptide and KLH conjugates. Antibodies were purified by affinity-chromatography using epitope-specific phosphopeptide. Non-phospho specific antibodies were removed by chromatography using non-phosphopeptide.
Applications	WB
Species Reactivity	Hu Ms Rt
Specificity	SREBP-2 (Phospho-Ser455) Antibody detects endogenous levels of SREBP-2 only when phosphorylated at Ser455
Immunogen Type	Peptide
Immunogen Description	A synthesized peptide derived from human SREBP-2 (Phospho-Ser455)
Target Name	SREBP-2
Modification	Phospho
Other Names	SREBF2, SREBP2, SREBP-2, BHLHd2
Accession No.	Swiss-Prot#: Q12772NCBI Gene ID: 6721
Uniprot	Q12772
GeneID	6721;
Target Species	human
Calculated MW	124kd
Concentration	1.0mg/ml
Formulation	Rabbit IgG in phosphate buffered saline (without Mg ²⁺ and Ca ²⁺), pH 7.4, 150mM NaCl, 0.02% sodium azide and 50% glycerol.
Storage	Store at -20°C

Application Details

Western blotting: 1:1000

Images



Western Blot analysis of lysates of 1. HUVEC cell and 2. HEK293T cell, using primary antibody at 1:1000 dilution.

Note: This product is for in vitro research use only