

## TAB1 (Phospho-Ser438) Antibody

Catalog No: #12645



Package Size: #12645-1 50ul #12645-2 100ul

Orders: [order@signalwayantibody.com](mailto:order@signalwayantibody.com)Support: [tech@signalwayantibody.com](mailto:tech@signalwayantibody.com)

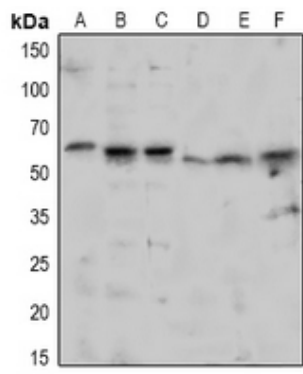
## Description

Product Name	TAB1 (Phospho-Ser438) Antibody
Host Species	Rabbit
Clonality	Polyclonal
Purification	Antibodies were produced by immunizing rabbits with synthetic phosphopeptide and KLH conjugates. Antibodies were purified by affinity-chromatography using epitope-specific phosphopeptide. Non-phospho specific antibodies were removed by chromatography using non-phosphopeptide.
Applications	WB
Species Reactivity	Hu Ms
Specificity	TAB1 (Phospho-Ser438) Antibody detects endogenous levels of TAB1 only when phosphorylated at Ser438
Immunogen Type	Peptide
Immunogen Description	A synthesized peptide derived from human TAB1 (Phospho-Ser438)
Target Name	TAB1
Modification	Phospho
Other Names	TAB1, 3'-Tab1, 3-Tab1, MAP3K7IP1, TAK1-binding protein 1
Accession No.	Swiss-Prot#: Q15750NCBI Gene ID: 10454
Uniprot	Q15750
GeneID	10454;
Target Species	human
Calculated MW	55kd
Concentration	1.0mg/ml
Formulation	Liquid in 0.42% Potassium phosphate, 0.87% Sodium chloride, pH 7.3, 30% glycerol, and 0.01% sodium azide.
Storage	Store at -20°C

## Application Details

WB (1/500 - 1/1000)

## Images



Western blot analysis of TAB1 (pS438) expression in HeLa (A), HEK293T (B), MCF7 (C), mouse eye (D), mouse brain (E), rat brain (F) whole cell lysates.

---

Note: This product is for in vitro research use only