

Tuberin (Phospho-Ser981) Antibody

Catalog No: #12650



Package Size: #12650-1 50ul #12650-2 100ul

Orders: order@signalwayantibody.comSupport: tech@signalwayantibody.com

Description

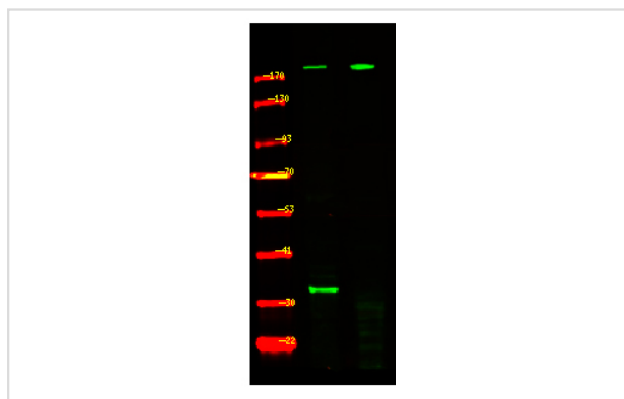
Product Name	Tuberin (Phospho-Ser981) Antibody
Host Species	Rabbit
Clonality	Polyclonal
Purification	Antibodies were produced by immunizing rabbits with synthetic phosphopeptide and KLH conjugates. Antibodies were purified by affinity-chromatography using epitope-specific phosphopeptide. Non-phospho specific antibodies were removed by chromatography using non-phosphopeptide.
Applications	WB
Species Reactivity	Hu Ms Rt
Specificity	Tuberin (Phospho-Ser981) Antibody detects endogenous levels of Tuberin only when phosphorylated at Ser981
Immunogen Type	Peptide
Immunogen Description	A synthesized peptide derived from human Tuberin (Phospho-Ser981)
Target Name	Tuberin
Modification	Phospho
Other Names	TSC2, LAM, Tuberous sclerosis 2 protein, TSC4, Tuberin, Tuberous sclerosis 2
Accession No.	Swiss-Prot#: P49815NCBI Gene ID: 7249
Uniprot	P49815
GeneID	7249;
Target Species	human
Calculated MW	220kd
Concentration	1.0mg/ml
Formulation	Liquid in PBS containing 50% glycerol, and 0.02% sodium azide.
Storage	Store at -20°C

Application Details

Western blotting: 1:1000

Images

Western Blot analysis of lysates of mouse brain (Left) and rat brain tissue (Right), using primary antibody at 1:1000 dilution.



Note: This product is for in vitro research use only