

## VHL (Phospho-Ser68) Antibody

Catalog No: #12654

Package Size: #12654-1 50ul #12654-2 100ul

Orders: [order@signalwayantibody.com](mailto:order@signalwayantibody.com)Support: [tech@signalwayantibody.com](mailto:tech@signalwayantibody.com)

## Description

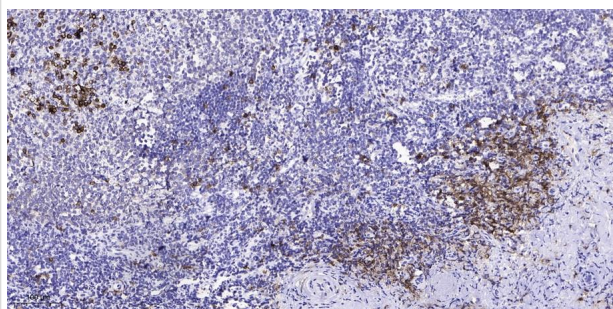
Product Name	VHL (Phospho-Ser68) Antibody
Host Species	Rabbit
Clonality	Polyclonal
Purification	The antibody was affinity-purified from rabbit antiserum by affinity-chromatography using epitope-specific immunogen.
Applications	IHC;IF
Species Reactivity	Hu Ms Rt
Specificity	VHL (Phospho-Ser68) Antibody detects endogenous levels of VHL only when phosphorylated at Ser68
Immunogen Type	Peptide
Immunogen Description	The antiserum was produced against synthesized peptide derived from human VHL around the phosphorylation site of Ser68.
Target Name	VHL
Modification	Phospho
Other Names	VHL, Elongin binding protein, HRCA1, RCA1, VHL 1, Von Hippel-Lindau syndrome, Protein G7, PVHL
Accession No.	Swiss-Prot#: P40337NCBI Gene ID: 7428
Uniprot	P40337
GenelD	7428;
Target Species	human
Concentration	1.0mg/ml
Formulation	Liquid in PBS containing 50% glycerol, 0.5% BSA and 0.02% sodium azide.
Storage	Store at -20°C

## Application Details

IHC 1:100-1:300;

IF 1:50-200

## Images



Immunohistochemical analysis of paraffin-embedded human tonsil. 1, Antibody was diluted at 1:200(4° overnight). 2, Tris-EDTA,pH9.0 was used for antigen retrieval. 3,Secondary antibody was diluted at 1:200(room temperature, 45min).

---

Note: This product is for in vitro research use only