

## XPA (Phospho-Ser196) Antibody

Catalog No: #12655

Package Size: #12655-1 50ul #12655-2 100ul

Orders: [order@signalwayantibody.com](mailto:order@signalwayantibody.com)Support: [tech@signalwayantibody.com](mailto:tech@signalwayantibody.com)

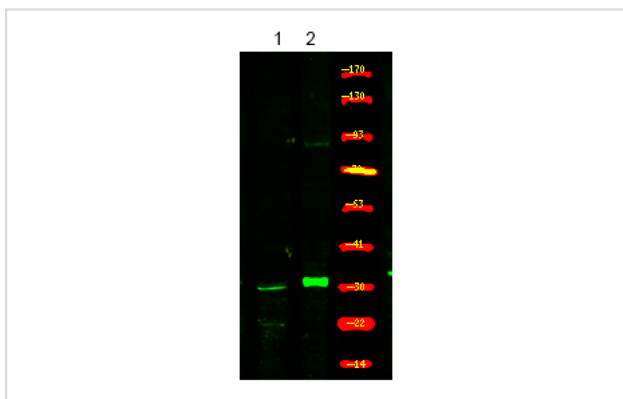
## Description

Product Name	XPA (Phospho-Ser196) Antibody
Host Species	Rabbit
Clonality	Polyclonal
Purification	Antibodies were produced by immunizing rabbits with synthetic phosphopeptide and KLH conjugates. Antibodies were purified by affinity-chromatography using epitope-specific phosphopeptide. Non-phospho specific antibodies were removed by chromatography using non-phosphopeptide.
Applications	WB
Species Reactivity	Hu Ms
Specificity	XPA (Phospho-Ser196) Antibody detects endogenous levels of XPA only when phosphorylated at Ser196
Immunogen Type	Peptide
Immunogen Description	A synthesized peptide derived from human XPA (Phospho-Ser196)
Target Name	XPA
Modification	Phospho
Other Names	XPA, XP1, XPAC, Excision repair-controlling
Accession No.	Swiss-Prot#: P23025NCBI Gene ID: 7507
Uniprot	P23025
GeneID	7507;
Target Species	human
Calculated MW	40kd
Concentration	1.0mg/ml
Formulation	Rabbit IgG in phosphate buffered saline (without Mg <sup>2+</sup> and Ca <sup>2+</sup> ), pH 7.4, 150mM NaCl, 0.02% sodium azide and 50% glycerol.
Storage	Store at -20°C

## Application Details

Western blotting: 1:1000

## Images



Western Blot analysis of lysates of 1. HeLa cell and 2. HeLa cell Serum-free treated, using primary antibody at 1:1000 dilution.

---

Note: This product is for in vitro research use only