

## Cyclin E1 (Phospho-Ser399) Antibody

Catalog No: #12659

Package Size: #12659-1 50ul #12659-2 100ul

Orders: [order@signalwayantibody.com](mailto:order@signalwayantibody.com)Support: [tech@signalwayantibody.com](mailto:tech@signalwayantibody.com)

## Description

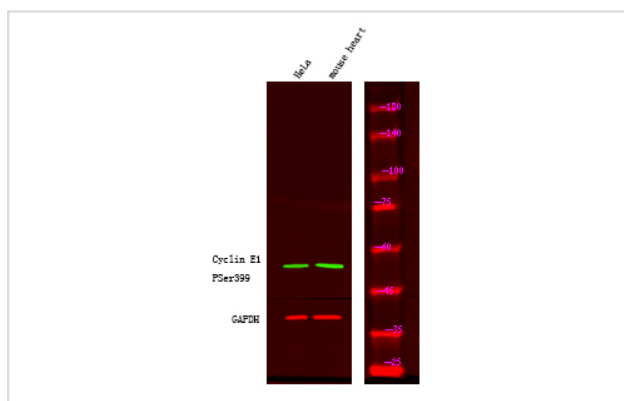
Product Name	Cyclin E1 (Phospho-Ser399) Antibody
Host Species	Rabbit
Clonality	Polyclonal
Purification	Antibodies were produced by immunizing rabbits with synthetic phosphopeptide and KLH conjugates. Antibodies were purified by affinity-chromatography using epitope-specific phosphopeptide. Non-phospho specific antibodies were removed by chromatography using non-phosphopeptide.
Applications	WB
Species Reactivity	Hu
Specificity	Cyclin E1 (Phospho-Ser399) Antibody detects endogenous levels of Cyclin E1 only when phosphorylated at Ser399
Immunogen Type	Peptide
Immunogen Description	A synthesized peptide derived from human Cyclin E1 (Phospho-Ser399)
Target Name	Cyclin E1
Modification	Phospho
Other Names	CCNE1, Cyclin E1, CCNE, Cyclin Es, Cyclin Et, G1/S-specific cyclin-E1, G1/s-specific cyclin e, Cyclin E
Accession No.	Swiss-Prot#: P24864NCBI Gene ID: 898
Uniprot	P24864
GeneID	898;
Target Species	human
Calculated MW	49kd
Concentration	1.0mg/ml
Formulation	Liquid in PBS containing 50% glycerol, and 0.02% sodium azide.
Storage	Store at -20°C

## Application Details

Western blotting: 1:1000

## Images

Western Blot analysis of lysates of HeLa cell and mouse heart, using primary antibody at 1:1000 dilution.



Note: This product is for in vitro research use only