

LRP6 (Phospho-Thr1479) Antibody

Catalog No: #12661



Package Size: #12661-1 50ul #12661-2 100ul

Orders: order@signalwayantibody.comSupport: tech@signalwayantibody.com

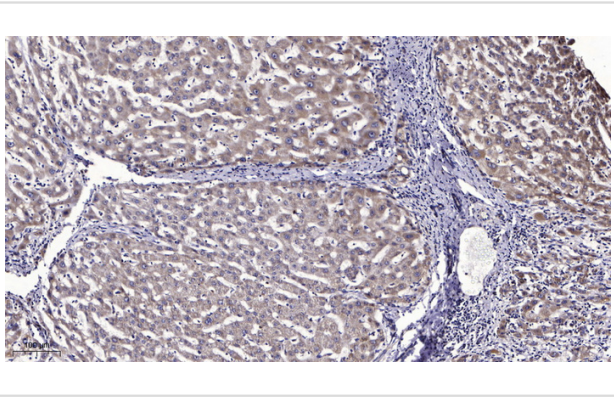
Description

Product Name	LRP6 (Phospho-Thr1479) Antibody
Host Species	Rabbit
Clonality	Polyclonal
Purification	Antibodies were produced by immunizing rabbits with synthetic phosphopeptide and KLH conjugates. Antibodies were purified by affinity-chromatography using epitope-specific phosphopeptide. Non-phospho specific antibodies were removed by chromatography using non-phosphopeptide.
Applications	WB
Species Reactivity	Hu Ms
Specificity	LRP6 (Phospho-Thr1479) Antibody detects endogenous levels of LRP6 only when phosphorylated at Thr1479
Immunogen Type	Peptide
Immunogen Description	A synthesized peptide derived from human LRP6 (Phospho-Thr1479)
Target Name	LRP6
Modification	Phospho
Other Names	LRP6, ADCAD2, LRP-6
Accession No.	Swiss-Prot#: O75581NCBI Gene ID: 4040
Uniprot	O75581
GeneID	4040;
Target Species	human
Calculated MW	180kd
Concentration	1.0mg/ml
Formulation	Rabbit IgG in phosphate buffered saline (without Mg ²⁺ and Ca ²⁺), pH 7.4, 150mM NaCl, 0.02% sodium azide and 50% glycerol.
Storage	Store at -20°C

Application Details

Western blotting: 1:1000

Images



Immunohistochemical analysis of paraffin-embedded human liver cancer. 1, Antibody was diluted at 1:200(4° overnight). 2, Tris-EDTA,pH9.0 was used for antigen retrieval. 3,Secondary antibody was diluted at 1:200(room temperature, 45min).

Note: This product is for in vitro research use only