

Dok-2 (Phospho-Tyr345) Antibody

Catalog No: #12662

Package Size: #12662-1 50ul #12662-2 100ul

Orders: order@signalwayantibody.comSupport: tech@signalwayantibody.com

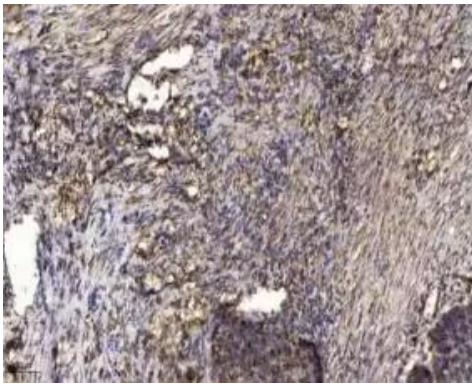
Description

Product Name	Dok-2 (Phospho-Tyr345) Antibody
Host Species	Rabbit
Clonality	Polyclonal
Purification	The antibody was affinity-purified from rabbit antiserum by affinity-chromatography using epitope-specific immunogen.
Applications	IHC;IF;ELISA
Species Reactivity	Hu Ms
Specificity	Phospho-Dok-2 (Y345) Polyclonal Antibody detects endogenous levels of Dok-2 protein only when phosphorylated at Y345.
Immunogen Type	Peptide
Immunogen Description	Synthesized phospho-peptide around the phosphorylation site of human Dok-2 (phospho Tyr345)
Target Name	Dok-2
Modification	Phospho
Other Names	DOK2, Docking protein 2, 56kD, Dok-2, Docking protein 2, Docking protein 2, 56kDa, p56(dok-2), p56dok-2, p56DOK
Accession No.	Swiss-Prot#: O60496NCBI Gene ID: 9046
Uniprot	O60496
GeneID	9046;
Target Species	human
Calculated MW	45kD
Concentration	1.0mg/ml
Formulation	Liquid in PBS containing 50% glycerol, 0.5% BSA and 0.02% sodium azide.
Storage	-15°C to -25°C/1 year(Do not lower than -25°C)

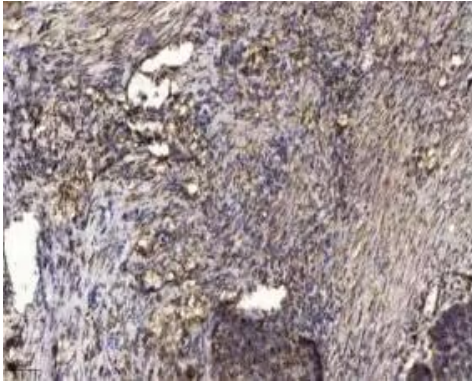
Application Details

IHC 1:100 - 1:300. ELISA: 1:20000.. IF 1:50-200

Images



Immunohistochemical analysis of paraffin-embedded human squamous cell carcinoma of lung. 1, Antibody was diluted at 1:200 (4° overnight). 2, Tris-EDTA, pH 9.0 was used for antigen retrieval. 3, Secondary antibody was diluted at 1:200 (room temperature, 45 min).



Immunohistochemical analysis of paraffin-embedded human squamous cell carcinoma of lung. 1, Antibody was diluted at 1:200 (4° overnight). 2, Tris-EDTA, pH 9.0 was used for antigen retrieval. 3, Secondary antibody was diluted at 1:200 (room temperature, 45 min).

Note: This product is for in vitro research use only