

PFKFB2 (Phospho-Ser466) Antibody

Catalog No: #12663

Package Size: #12663-1 50ul #12663-2 100ul

Orders: order@signalwayantibody.comSupport: tech@signalwayantibody.com

Description

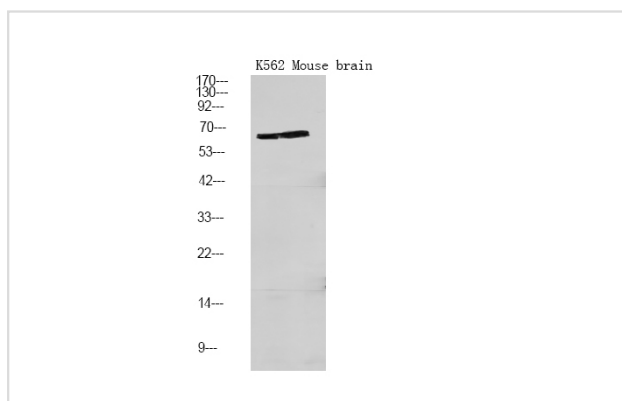
Product Name	PFKFB2 (Phospho-Ser466) Antibody
Host Species	Rabbit
Clonality	Polyclonal
Purification	Antibodies were produced by immunizing rabbits with synthetic phosphopeptide and KLH conjugates. Antibodies were purified by affinity-chromatography using epitope-specific phosphopeptide. Non-phospho specific antibodies were removed by chromatography using non-phosphopeptide.
Applications	WB
Species Reactivity	Hu Ms Rt
Specificity	PFKFB2 (Phospho-Ser466) Antibody detects endogenous levels of PFKFB2 only when phosphorylated at Ser466
Immunogen Type	Peptide
Immunogen Description	A synthesized peptide derived from human PFKFB2 (Phospho-Ser466)
Target Name	PFKFB2
Modification	Phospho
Other Names	PFKFB2, 6PF-2-K/Fru-2,6-P2ase 2, PFK-2/FBPase-2, PFK/FBPase 2, PFKFB, cardiac
Accession No.	Swiss-Prot#: O60825NCBI Gene ID: 5208
Uniprot	O60825
GeneID	5208;
Target Species	human
Calculated MW	58kd
Concentration	1.0mg/ml
Formulation	Rabbit IgG in phosphate buffered saline (without Mg ²⁺ and Ca ²⁺), pH 7.4, 150mM NaCl, 0.02% sodium azide and 50% glycerol.
Storage	Store at -20°C

Application Details

Western blotting: 1:1000

Images

Western Blot analysis of lysates of K562 cell and Mouse brain, using primary antibody at 1:1000 dilution.



Note: This product is for in vitro research use only