

BTK (Phospho-Ser179) Antibody

Catalog No: #12672



Package Size: #12672-1 50ul #12672-2 100ul

Orders: order@signalwayantibody.comSupport: tech@signalwayantibody.com

Description

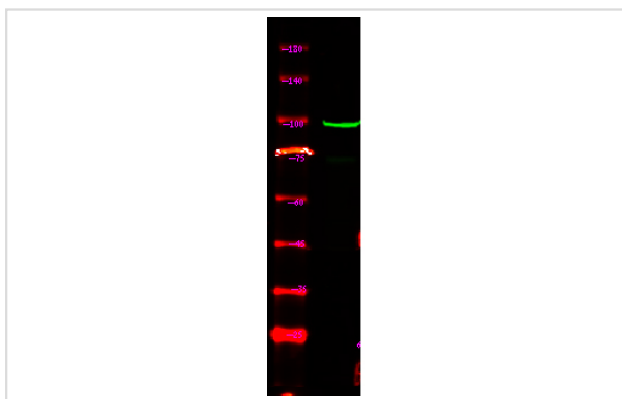
| | |
|-----------------------|--|
| Product Name | BTK (Phospho-Ser179) Antibody |
| Host Species | Rabbit |
| Clonality | Polyclonal |
| Purification | Antibodies were produced by immunizing rabbits with synthetic phosphopeptide and KLH conjugates. Antibodies were purified by affinity-chromatography using epitope-specific phosphopeptide. Non-phospho specific antibodies were removed by chromatography using non-phosphopeptide. |
| Applications | WB |
| Species Reactivity | Hu Ms Rt |
| Specificity | BTK (Phospho-Ser179) Antibody detects endogenous levels of BTK only when phosphorylated at Ser179 |
| Immunogen Type | Peptide |
| Immunogen Description | A synthesized peptide derived from human BTK (Phospho-Ser179) |
| Target Name | BTK |
| Modification | Phospho |
| Other Names | BTK, AGMX1, AT, ATK, XLA, PSCTK1, B-cell progenitor kinase, BPK, Bruton tyrosine kinase, Tyrosine-protein kinase BTK, IMD1 |
| Accession No. | Swiss-Prot#: Q06187NCBI Gene ID: 695 |
| Uniprot | Q06187 |
| GeneID | 695; |
| Target Species | human |
| Calculated MW | 80kd |
| Concentration | 1.0mg/ml |
| Formulation | Rabbit IgG in phosphate buffered saline (without Mg ²⁺ and Ca ²⁺), pH 7.4, 150mM NaCl, 0.02% sodium azide and 50% glycerol. |
| Storage | Store at -20°C |

Application Details

Western blotting: 1:1000

Images

Western Blot analysis of lysates of mouse heart, using primary antibody at 1:1000 dilution.



Note: This product is for in vitro research use only