

CACNA1C (Phospho-Ser1981) Antibody

Catalog No: #12674



Package Size: #12674-1 50ul #12674-2 100ul

Orders: order@signalwayantibody.comSupport: tech@signalwayantibody.com

Description

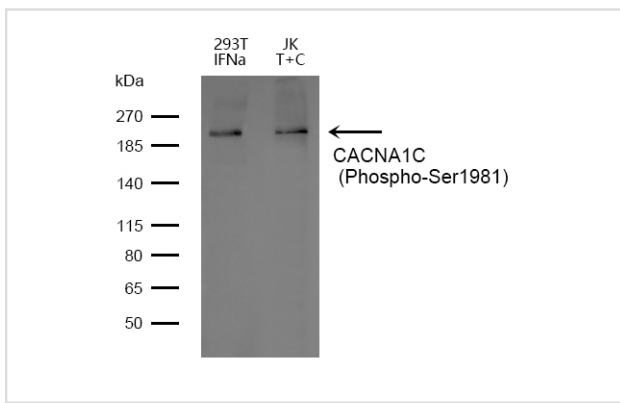
Product Name	CACNA1C (Phospho-Ser1981) Antibody
Host Species	Rabbit
Clonality	Polyclonal
Purification	Antibodies were produced by immunizing rabbits with synthetic phosphopeptide and KLH conjugates. Antibodies were purified by affinity-chromatography using epitope-specific phosphopeptide. Non-phospho specific antibodies were removed by chromatography using non-phosphopeptide.
Applications	WB
Species Reactivity	Hu Ms Rt
Specificity	CACNA1C (Phospho-Ser1981) Antibody detects endogenous levels of CACNA1C only when phosphorylated at Ser1981
Immunogen Type	Peptide
Immunogen Description	A synthesized peptide derived from human CACNA1C (Phospho-Ser1981)
Target Name	CACNA1C
Modification	Phospho
Other Names	CACNA1C, Alpha 1c, CaV1.2, CACH2, CACNL1A1, CCHL1A1, DHPR, alpha-1 subunit, DHP receptor, DHPr, LQT8, TS, CACN2
Accession No.	Swiss-Prot#: Q13936NCBI Gene ID: 775
Uniprot	Q13936
GeneID	775;
Target Species	human
Calculated MW	249kd
Concentration	1.0mg/ml
Formulation	Rabbit IgG in phosphate buffered saline (without Mg ²⁺ and Ca ²⁺), pH 7.4, 150mM NaCl, 0.02% sodium azide and 50% glycerol.
Storage	Store at -20°C

Application Details

Western blotting: 1:1000

Images

Western blot analysis of lysates from 293T IFNa, JK T+C.



Note: This product is for in vitro research use only