

## CDH1 (Phospho-Ser844) Antibody

Catalog No: #12676

Package Size: #12676-1 50ul #12676-2 100ul

Orders: [order@signalwayantibody.com](mailto:order@signalwayantibody.com)Support: [tech@signalwayantibody.com](mailto:tech@signalwayantibody.com)

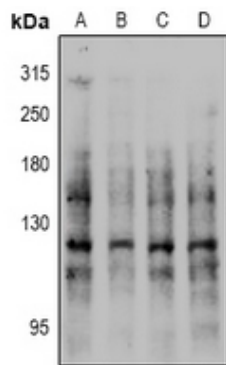
## Description

Product Name	CDH1 (Phospho-Ser844) Antibody
Host Species	Rabbit
Clonality	Polyclonal
Purification	Antibodies were produced by immunizing rabbits with synthetic phosphopeptide and KLH conjugates. Antibodies were purified by affinity-chromatography using epitope-specific phosphopeptide. Non-phospho specific antibodies were removed by chromatography using non-phosphopeptide.
Applications	WB
Species Reactivity	Hu Ms Rt
Specificity	CDH1 (Phospho-Ser844) Antibody detects endogenous levels of CDH1 only when phosphorylated at Ser844
Immunogen Type	Peptide
Immunogen Description	A synthesized peptide derived from human CDH1 (Phospho-Ser844)
Target Name	CDH1
Modification	Phospho
Other Names	CDH1, CD324, CDHE, Cell-CAM 120/80, E Cadherin, E-Cadherin, ECAD, Epithelial cadherin, Arc-1, UVO, Cadherin-1, CAM 120/80, CD324 antigen, LCAM, Uvomorulin
Accession No.	Swiss-Prot#: P12830NCBI Gene ID: 999
Uniprot	P12830
GeneID	999;
Target Species	human
Calculated MW	120kd
Concentration	1.0mg/ml
Formulation	Liquid in 0.42% Potassium phosphate, 0.87% Sodium chloride, pH 7.3, 30% glycerol, and 0.01% sodium azide.
Storage	Store at -20°C

## Application Details

WB (1/500 - 1/1000)

## Images



Western blot analysis of E Cadherin (pS844) expression in HEK293T (A), HepG2 (B), A549 (C), PC12 (D) whole cell lysates.

Note: This product is for in vitro research use only