

## p56 Dok-2 (Phospho-Tyr139) Antibody

Catalog No: #12679

Package Size: #12679-1 50ul #12679-2 100ul

Orders: [order@signalwayantibody.com](mailto:order@signalwayantibody.com)Support: [tech@signalwayantibody.com](mailto:tech@signalwayantibody.com)

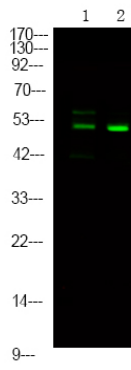
## Description

Product Name	p56 Dok-2 (Phospho-Tyr139) Antibody
Host Species	Rabbit
Clonality	Polyclonal
Purification	Antibodies were produced by immunizing rabbits with synthetic phosphopeptide and KLH conjugates. Antibodies were purified by affinity-chromatography using epitope-specific phosphopeptide. Non-phospho specific antibodies were removed by chromatography using non-phosphopeptide.
Applications	WB
Species Reactivity	Hu Ms
Specificity	p56 Dok-2 (Phospho-Tyr139) Antibody detects endogenous levels of p56 Dok-2 only when phosphorylated at Tyr139
Immunogen Type	Peptide
Immunogen Description	A synthesized peptide derived from human p56 Dok-2 (Phospho-Tyr139)
Target Name	p56 Dok-2
Modification	Phospho
Other Names	DOK2, Docking protein 2, 56kD, Dok-2, Docking protein 2, Docking protein 2, 56kDa, p56(dok-2), p56dok-2, p56DOK
Accession No.	Swiss-Prot#: O60496NCBI Gene ID: 9046
Uniprot	O60496
GeneID	9046;
Target Species	human
Calculated MW	56kd
Concentration	1.0mg/ml
Formulation	Rabbit IgG in phosphate buffered saline (without Mg <sup>2+</sup> and Ca <sup>2+</sup> ), pH 7.4, 150mM NaCl, 0.02% sodium azide and 50% glycerol.
Storage	Store at -20°C

## Application Details

Western blotting: 1:1000

## Images



Western Blot analysis of lysates of 1. Hela cell and 2. Hela cell treated with 100ng/mL LPS for 30min, using primary antibody at 1:1000 dilution.

Note: This product is for in vitro research use only