

ETS1 (Phospho-Ser251) Antibody

Catalog No: #12680

Package Size: #12680-1 50ul #12680-2 100ul

Orders: order@signalwayantibody.comSupport: tech@signalwayantibody.com

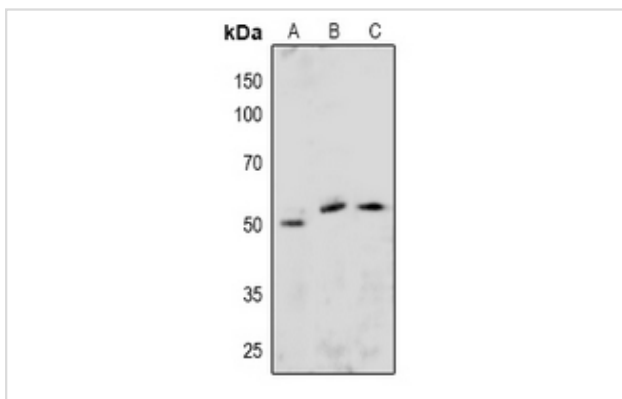
Description

Product Name	ETS1 (Phospho-Ser251) Antibody
Host Species	Rabbit
Clonality	Polyclonal
Purification	Antibodies were produced by immunizing rabbits with synthetic phosphopeptide and KLH conjugates. Antibodies were purified by affinity-chromatography using epitope-specific phosphopeptide. Non-phospho specific antibodies were removed by chromatography using non-phosphopeptide.
Applications	WB, IH
Species Reactivity	Hu Ms Rt
Specificity	ETS1 (Phospho-Ser251) Antibody detects endogenous levels of ETS1 only when phosphorylated at Ser251
Immunogen Type	Peptide
Immunogen Description	A synthesized peptide derived from human ETS1 (Phospho-Ser251)
Target Name	ETS1
Modification	Phospho
Other Names	ETS1, Ets protein, ETS-1, EWSR2, p54, Protein C-ets-1
Accession No.	Swiss-Prot#: P14921NCBI Gene ID: 2113
Uniprot	P14921
GeneID	2113;
Target Species	human
Calculated MW	50kd
Concentration	1.0mg/ml
Formulation	Liquid in 0.42% Potassium phosphate, 0.87% Sodium chloride, pH 7.3, 30% glycerol, and 0.01% sodium azide.
Storage	Store at -20°C

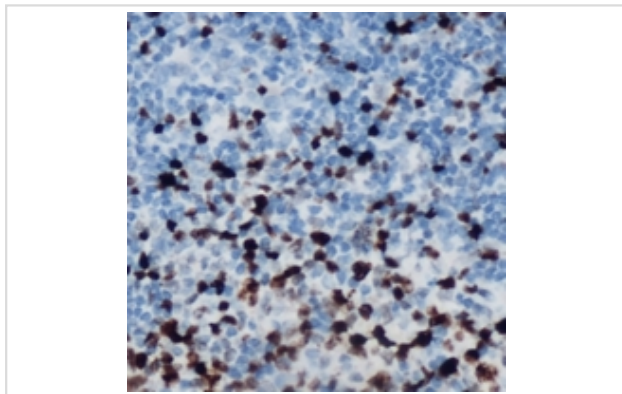
Application Details

WB (1/500 - 1/1000), IH (1/50 - 1/100)

Images



Western blot analysis of ETS1 (pS251) expression in HeLa (A), NIH3T3 (B), H9C2 (C) whole cell lysates.



Immunohistochemical analysis of ETS1 (pS251) staining in human lymph node formalin fixed paraffin embedded tissue section. The section was pre-treated using heat mediated antigen retrieval with sodium citrate buffer (pH 6.0). The section was then incubated with the antibody at room temperature and detected using an HRP conjugated compact polymer system. DAB was used as the chromogen. The section was then counterstained with haematoxylin and mounted with DPX.

Note: This product is for in vitro research use only