

IRF5 (Phospho-Ser437) Antibody

Catalog No: #12688

Orders: order@signalwayantibody.com

Support: tech@signalwayantibody.com

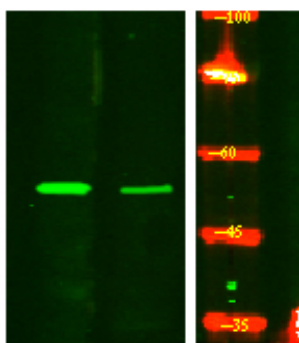
Description

Product Name	IRF5 (Phospho-Ser437) Antibody
Host Species	Rabbit
Clonality	Polyclonal
Purification	Antibodies were produced by immunizing rabbits with synthetic phosphopeptide and KLH conjugates. Antibodies were purified by affinity-chromatography using epitope-specific phosphopeptide. Non-phospho specific antibodies were removed by chromatography using non-phosphopeptide.
Applications	WB
Species Reactivity	Hu Ms Rt
Specificity	IRF5 (Phospho-Ser437) Antibody detects endogenous levels of IRF5 only when phosphorylated at Ser437
Immunogen Type	Peptide
Immunogen Description	A synthesized peptide derived from human IRF5 (Phospho-Ser437)
Target Name	IRF5
Modification	Phospho
Other Names	IRF5, Interferon regulatory factor 5, IRF-5, SLEB10, IBD14
Accession No.	Swiss-Prot#: Q13568NCBI Gene ID: 3663
Uniprot	Q13568
GeneID	3663;
Target Species	human
Calculated MW	56kd
Concentration	1.0mg/ml
Formulation	Liquid in PBS containing 50% glycerol, 0.5% BSA and 0.02% sodium azide.
Storage	Store at -20°C

Application Details

WB 1:500-2000

Images



Western Blot analysis of HeLa treated or untreated by LPS lysis, using primary antibody at 1:1000 dilution. Secondary antibody was diluted at 1:10000

Note: This product is for in vitro research use only