

MDM2 (Phospho-Tyr394) Antibody

Catalog No: #12689

Package Size: #12689-1 50ul #12689-2 100ul

Orders: order@signalwayantibody.comSupport: tech@signalwayantibody.com

Description

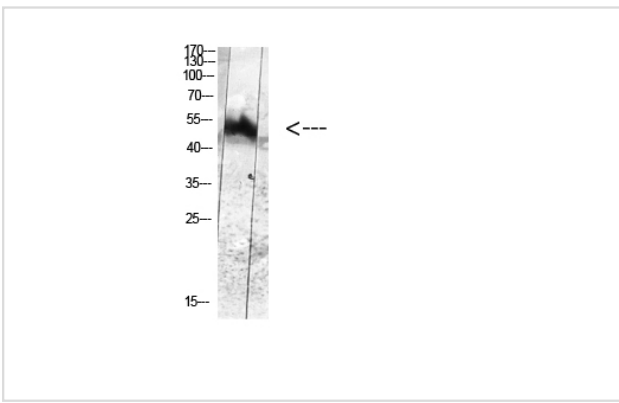
| | |
|-----------------------|---|
| Product Name | MDM2 (Phospho-Tyr394) Antibody |
| Host Species | Rabbit |
| Clonality | Polyclonal |
| Purification | Antibodies were produced by immunizing rabbits with synthetic phosphopeptide and KLH conjugates. Antibodies were purified by affinity-chromatography using epitope-specific phosphopeptide. Non-phospho specific antibodies were removed by chromatography using non-phosphopeptide. |
| Applications | WB |
| Species Reactivity | Hu Ms |
| Specificity | MDM2 (Phospho-Tyr394) Antibody detects endogenous levels of MDM2 only when phosphorylated at Tyr394 |
| Immunogen Type | Peptide |
| Immunogen Description | A synthesized peptide derived from human MDM2 (Phospho-Tyr394) |
| Target Name | MDM2 |
| Modification | Phospho |
| Other Names | MDM2, ACTFS, Double minute 2 protein, Hdm2, MDM2 variant FB30, HDMX, Oncoprotein Mdm2, p53-binding protein Mdm2, MDM2 variant FB28 |
| Accession No. | Swiss-Prot#: Q00987NCBI Gene ID: 4193 |
| Uniprot | Q00987 |
| GeneID | 4193; |
| Target Species | human |
| Calculated MW | 90kd |
| Concentration | 1.0mg/ml |
| Formulation | Liquid in PBS containing 50% glycerol, 0.5% BSA and 0.02% sodium azide. |
| Storage | Store at -20°C |

Application Details

Western blotting: 1:1000

Images

Western blot analysis of HELA-UV Cell Lysate using antibody



Note: This product is for in vitro research use only