

MET (Phospho-Tyr1365) Antibody

Catalog No: #12690

Package Size: #12690-1 50ul #12690-2 100ul

Orders: order@signalwayantibody.comSupport: tech@signalwayantibody.com

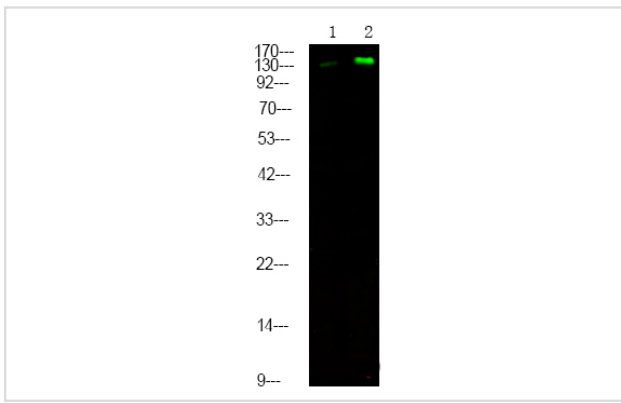
Description

Product Name	MET (Phospho-Tyr1365) Antibody
Host Species	Rabbit
Clonality	Polyclonal
Purification	Antibodies were produced by immunizing rabbits with synthetic phosphopeptide and KLH conjugates. Antibodies were purified by affinity-chromatography using epitope-specific phosphopeptide. Non-phospho specific antibodies were removed by chromatography using non-phosphopeptide.
Applications	WB
Species Reactivity	Hu Ms Rt
Specificity	MET (Phospho-Tyr1365) Antibody detects endogenous levels of MET only when phosphorylated at Tyr1365
Immunogen Type	Peptide
Immunogen Description	A synthesized peptide derived from human MET (Phospho-Tyr1365)
Target Name	MET
Modification	Phospho
Other Names	MET, AUTS9, C-Met, HGF/SF receptor, HGFR, Met kinase, Proto-oncogene c-Met, Scatter factor receptor, SF receptor, HGF receptor, RCCP2, Tyrosine-protein kinase Met
Accession No.	Swiss-Prot#: P08581NCBI Gene ID: 4233
Uniprot	P08581
GeneID	4233;
Target Species	human
Calculated MW	155kd
Concentration	1.0mg/ml
Formulation	Liquid in PBS containing 50% glycerol, and 0.02% sodium azide.
Storage	Store at -20°C

Application Details

Western blotting: 1:1000

Images



Western Blot analysis of lysates of 1. Hela cell and 2. HepG2 cell , using primary antibody at 1:1000 dilution.

Note: This product is for in vitro research use only